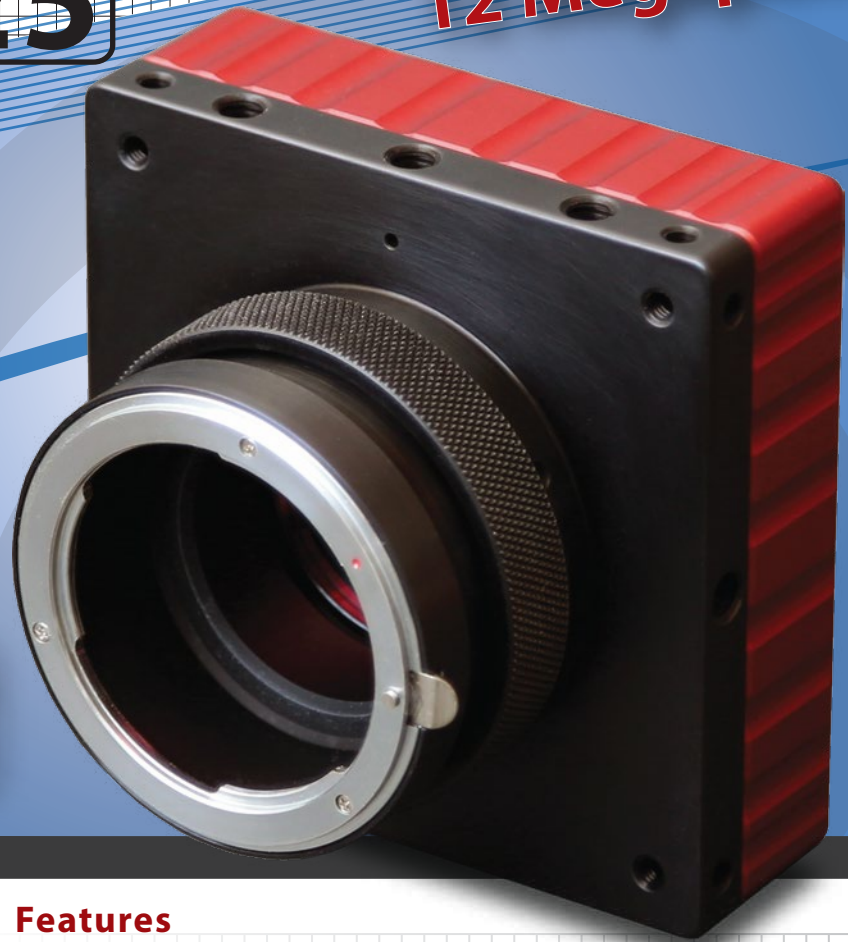


# Flare<sup>TM</sup>

## 12M125

High Resolution  
Motion Capture  
12 Megapixels



4K x 3K @ 124fps  
1080p @ 469fps



### Features

- Monochrome and color models
- Camera Link output
- Selectable 8-bit or 10-bit pixel depth
- Advanced global shuttering with CDS
- High Dynamic Range modes
- Advanced Auto-Exposure Control
- Auto and Tracking White Balance

### Applications

- Inspection and monitoring
- Motion capture
- Research
- Broadcast and cinema

**IOI**  
IO INDUSTRIES

# Specifications

## Camera Specifications

Camera Models	12M125MCL-F (monochrome, F-mount) 12M125MCL-C (monochrome, C-mount)	12M125CCL-F (color, F-mount) 12M125CCL-C (color, C-mount)
Sensor Type	CMOS (CMOSIS CMV12000)	
Sensor Size (H x V)	4096 x 3072 pixels (5.5µm square pixels)	
Optical Format	Super 35mm / APS-C (28.1mm diagonal)	
Dynamic Range / Sensitivity	60 dB, 4.64 V/lux.s	
Shutter	Pipelined Global Shutter with CDS	
Frame Rate (full resolution)	124 fps (8-bit), 99 fps (10-bit)	
CL Configurations	Base, Medium, Single Full, Dual Full (80MHz Pixel Clock)	
CL Tap Geometry	8-bit (2x, 3x, 4x, 8x, 10x, 16x, 20x) or 10-bit (2x, 4x, 8x, 16x)	
Exposure Control	Trigger width, timed, or auto-exposure control	
Image Correction	Black level, column and row FPN, bad pixel replacement	
Color Processing	Auto white balance (tracking or manual), programmable LUTs	
Gamma / LUT	User-programmable 4096-point LUTs	
Configuration	ASCII terminal commands or included software	

### Mechanical / Electrical

**Lens Mount:** M42 x 0.75 with F- and C-Mount adapters

**Dimensions (no lens adapter):** 91.7mm x 91.7mm x 44.5mm

**Dimensions (w. F-mount):** 91.7mm x 91.7mm x 73.7mm

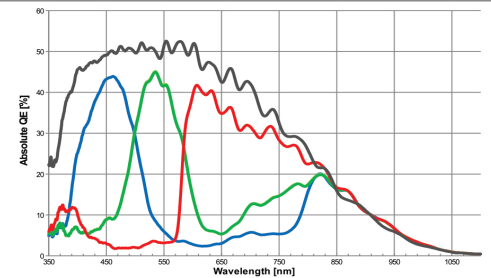
**Ambient Operating Temperature:** -30° to 45°C

**Power Requirements:** 12V DC (via Hirose)

**Power Consumption:** 6W (Single Full), 7.5W (Dual Full)

**Weight (typical):** 490g (600g with F-mount)

### Spectral Response



## Mechanical Drawings

