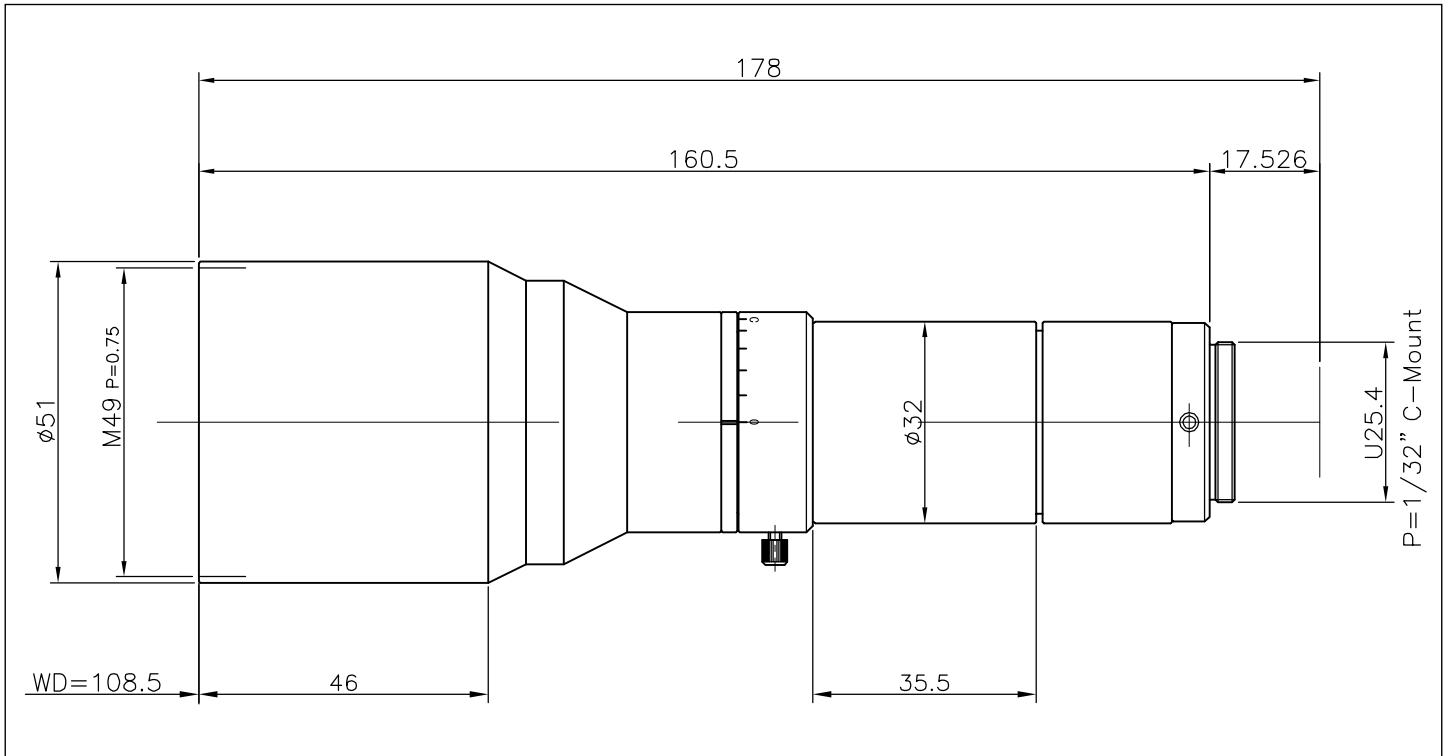


# MGTL05-1.1



MODEL		MGTL05-1.1
Application		Object side Telecentric lens
Magnification		0.5x
W D		108.5mm
O I		286.5mm
F.NO		6.37
Object side NA		0.039
Resolution(Center)		8.6 $\mu$
Depth of Field	1 / 2"	2.04mm
	2 / 3"	2.80mm
	1 inch	4.08mm
TV Distortion	1 / 2"	+0.00%
	2 / 3"	+0.00%
	1 inch	+0.00%
Weight		385g
CCD		1.1 inch
Mount		C Mount

- Specifications mentioned above are design values.
- Resolution indicates a theoretical resolution at a wavelength of 550nm.
- Depth of field is calculating using 1/2" camera (permissible circle of confusion 40 $\mu$ ).
- Specifications and dimensions are subject to change without notice.