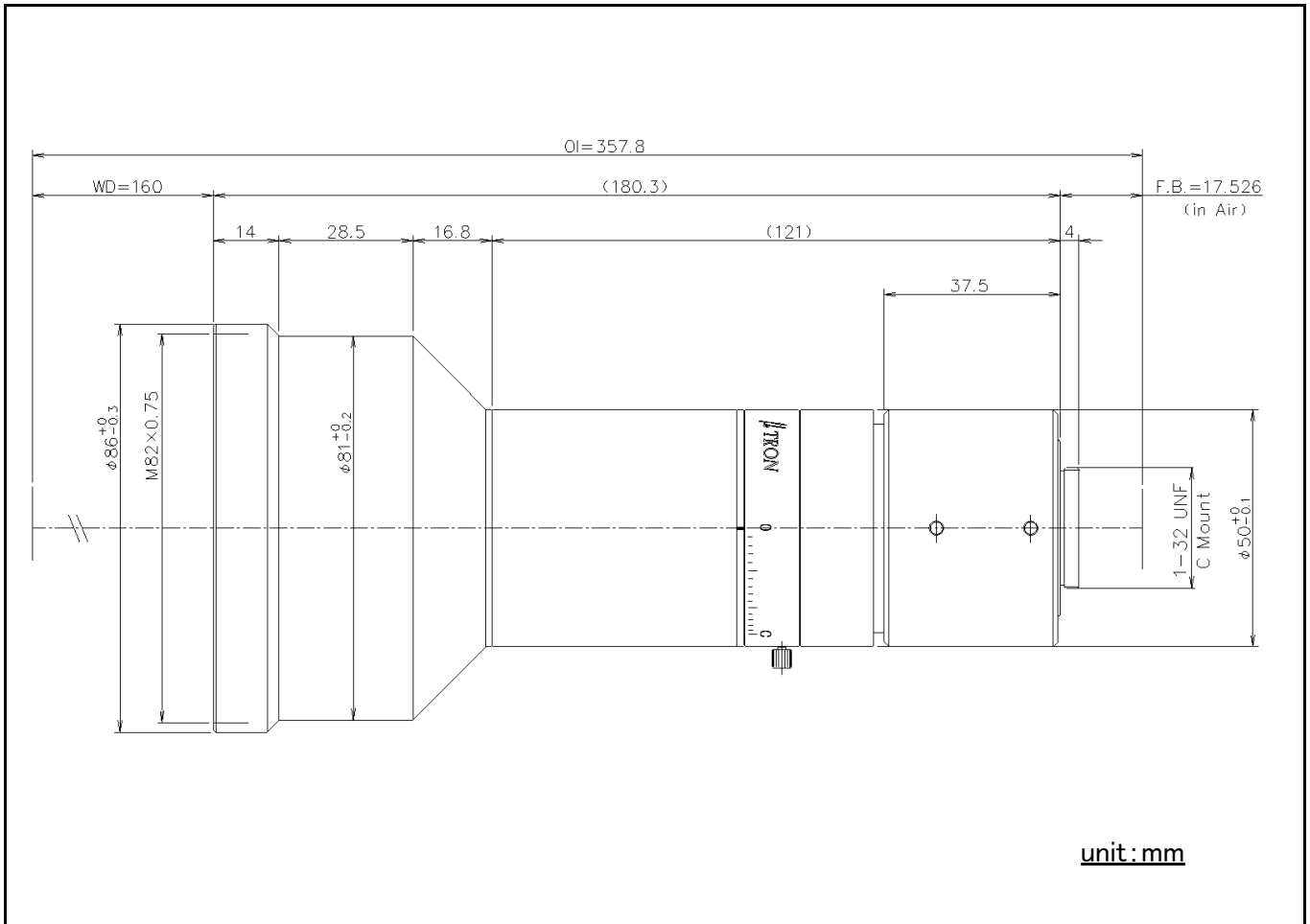


MGTL0345V Telecentric Lens for 1.1 inch



Model	MGTL0345V
Magnification	0.345X
W D	160.0mm
O I	357.8mm
Effective F No.	4.8
Object side NA	0.036
Object side Resolution	9.3 μ m
Depth of Field	3.2mm
TV Distortion	0.00%
Maximum Compatible Sensor	ϕ 18.4mm
Weight	Approx. 870g
Mount	C Mount
Filter Size	M82 P=0.75

◦Specifications mentioned above are design values.

◦Resolution indicates a theoretical resolution at a wavelength of 550nm.

◦Depth of field is calculated assuming permissible circle of confusion is 40 μ m.

◦Specifications and dimensions are subject to change without notice.

MaxxVision®

Sigmaringer Str. 121
70567 Stuttgart
Tel.: 0711 997 996 3
www.maxxvision.com