

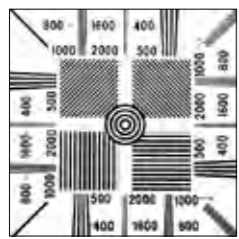
# High Resolution Machine Vision Lens for Over 5 Mega Pixel

Suitable for inspection and alignment , required for high accuracy

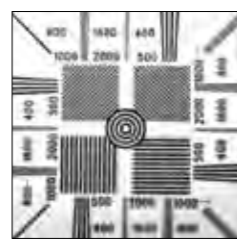
- ▶ Suitable for 5 mega – 10 mega pixel camera
- ▶ f16mm – f75mm are compatible with 1.1"
- ▶ Suitable for different types of sensor: CMOSIS CMV2000, CMV4000, OnSemi VITA5000, Sony IMX174, etc..
- ▶ Excellent performance at macro imaging, compared with conventional mega pixel CCTV lens
- ▶ Stable performance at different working distance by floating design
- ▶ Large aperture
- ▶ Robust design, suitable for machine vision applications

## Comparison of resolution

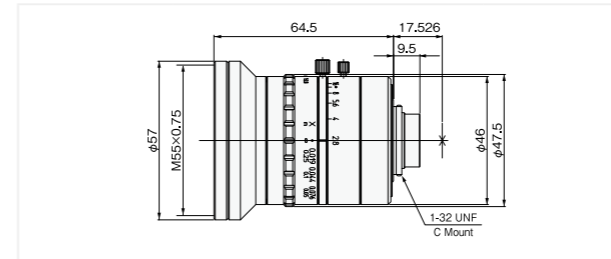
5 Mega Pixel Lens



Mega Pixel Lens

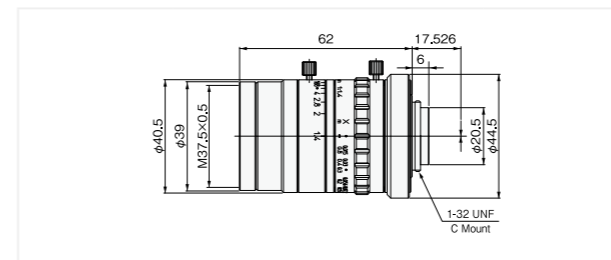


### HF0528J-2



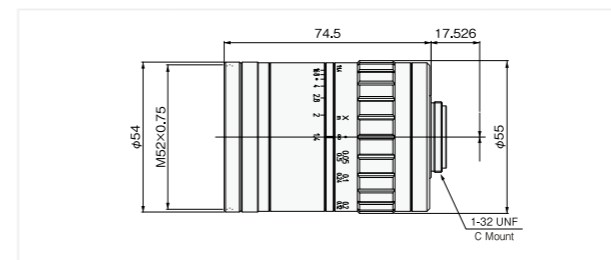
Focal length	5mm	TV distortion	0.29%
∞F No.	2.8	Filter pitch	M55 P=0.75
Range of WD	50mm - ∞	Maximum Compatible sensor	2/3
Maximum Magnification	0.076x		

### HF1214J



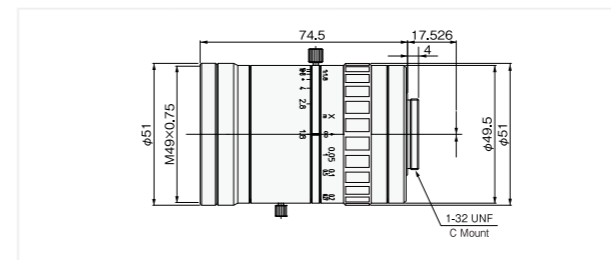
Focal length	12mm	TV distortion	-0.31%
∞F No.	1.4	Filter pitch	M37.5 P=0.5
Range of WD	100mm - ∞	Maximum Compatible sensor	2/3
Maximum Magnification	0.1x		

### HF2514V



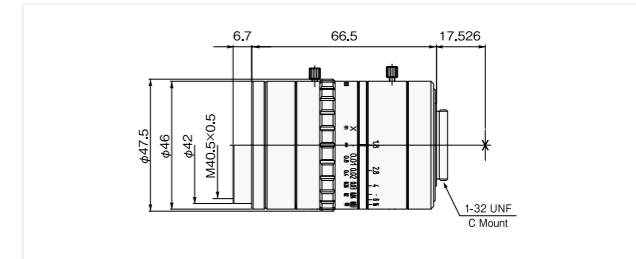
Focal length	25mm	TV distortion	-0.09%
∞F No.	1.4	Filter pitch	M52 P=0.75
Range of WD	80mm - ∞	Maximum Compatible sensor	1.1
Maximum Magnification	0.3x		

### HF5018V-2



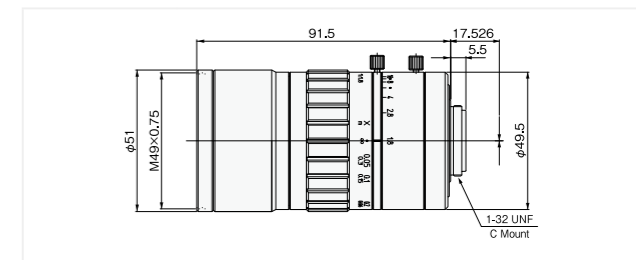
Focal length	50mm	TV distortion	-0.01%
∞F No.	1.8	Filter pitch	M49 P=0.75
Range of WD	192mm - ∞	Maximum Compatible sensor	1.2
Maximum Magnification	0.3x		

### HF0818J-2



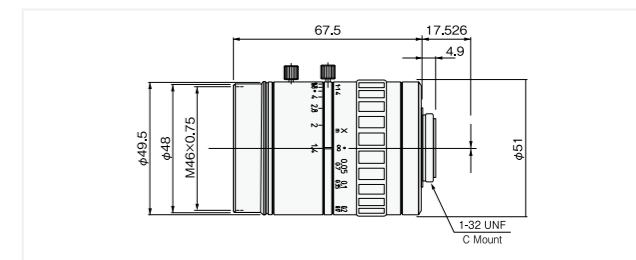
Focal length	8mm	TV distortion	0.31%
∞F No.	1.8	Filter pitch	M40.5 P=0.75
Range of WD	100mm - ∞	Maximum Compatible sensor	2/3
Maximum Magnification	0.078x		

### HF1618V



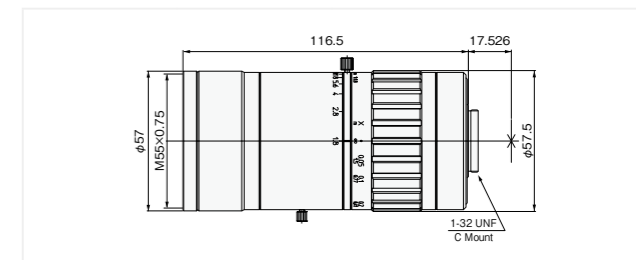
Focal length	16mm	TV distortion	-0.28%
∞F No.	1.8	Filter pitch	M49 P=0.75
Range of WD	33mm - ∞	Maximum Compatible sensor	1.1
Maximum Magnification	0.3x		

### HF3514V-2



Focal length	35mm	TV distortion	-0.027%
∞F No.	1.4	Filter pitch	M46 P=0.75
Range of WD	110mm - ∞	Maximum Compatible sensor	1.1
Maximum Magnification	0.3x		

### HF7518V



Focal length	75mm	TV distortion	0.00%
∞F No.	1.8	Filter pitch	M55 P=0.75
Range of WD	290mm - ∞	Maximum Compatible sensor	1.2
Maximum Magnification	0.3x		

\* Indicated specifications are design values. \*TV distortion indicates a value for 2/3" at minimum working distance.