

MV-CE100-31GM

10 MP 1/2.3" CMOS GigE Area Scan Camera



GEN*ic*CAM

GIG*E* VISION

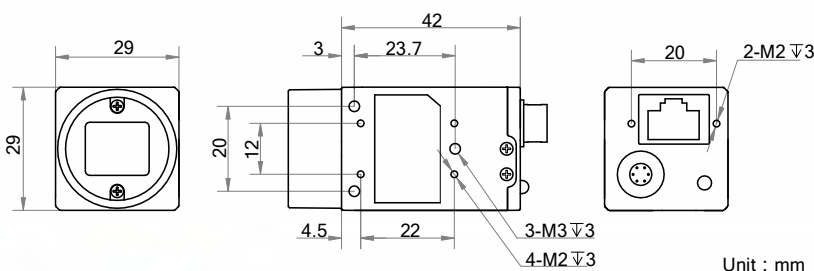
Introduction

MV-CE100-31GM camera is a high quality device that can be used in a variety of applications, including electronic semiconductor fabrication, factory automation, quality inspection.

Key Feature

- Adopts GigE interface and max. transmission distance of 100 meters without relay
- Up to 128 MB local memory for burst transmission and retransmission
- Supports auto exposure control, LUT, Gamma correction, etc.
- Supports hardware trigger, software trigger, etc.
- Compatible with GigE Vision V1.2 Protocol, GenICam Standard, and third-party software based on the protocol and standard

Dimension



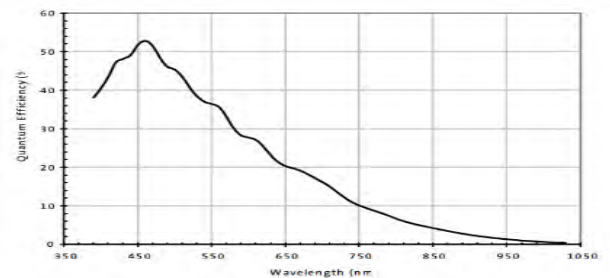
Available Model

Mono camera: MV-CE100-31GM

Applicable Industry

Electronic semiconductor, factory automation, quality inspection, etc.

Sensor Quantum Efficiency



Specification

Model	MV-CE100-31GM
Camera	
Sensor type	CMOS, rolling shutter
Sensor model	MT9J003
Pixel size	1.67 μm \times 1.67 μm
Sensor size	1/2.3"
Resolution	3840 \times 2748
Max. frame rate	11 fps @3840 \times 2748
Dynamic range	65 dB
SNR	34 dB
Gain	0 dB to 15.3 dB
Exposure time	26 μs to 1 s
Shutter mode	Off/Once/Continuous exposure mode
Mono/color	Mono
Pixel format	Mono 8/10/10p/12/12p
Binning	Supports 2 \times 2
Decimation	Not support
Reverse image	Supports horizontal reverse image output
Image buffer	128 MB
Electrical features	
Data interface	Gigabit Ethernet
Digital I/O	Opto-isolated input \times 1, opto-isolated output \times 1, and bi-directional non-isolated I/O \times 1
Power supply	5 VDC to 15 VDC, supports PoE power supply
Power consumption	Approx. 2.6 W@12 VDC
Structure	
Lens mount	C-Mount
Dimension	29 mm \times 29 mm \times 42 mm (1.1" \times 1.1" \times 1.7")
Weight	Approx. 68 g (0.15 lb.)
Ingress protection	IP30 (under proper lens installation and wiring)
Temperature	Working temperature: 0 $^{\circ}\text{C}$ to 50 $^{\circ}\text{C}$ (32 $^{\circ}\text{F}$ to 122 $^{\circ}\text{F}$) Storage temperature: -30 $^{\circ}\text{C}$ to 70 $^{\circ}\text{C}$ (-22 $^{\circ}\text{F}$ to 158 $^{\circ}\text{F}$)
Humidity	20% to 80% RH, without condensation
General	
Client software	MVS or third-party software meeting with GigE Vision Protocol
Operating system	32/64-bit Windows XP/7/10, 32/64-bit Linux and 64-bit MacOS
Compatibility	GigE Vision
Certification	CE, FCC, RoHS, KC

HIKROBOT

Hangzhou Hikrobot Technology Co., Ltd.
No.399 Danfeng Road, Binjiang District, Hangzhou 310051, China.
en.hikrobotics.com

MaxxVision[®]

Sigmaringer Str. 121
70567 Stuttgart
Tel.: 0711 997 996 3
www.maxxvision.com

Copyright Hikrobot

Hangzhou Hikrobot Technology Co., Ltd. All Rights Reserved. Hangzhou Hikrobot Technology does not tolerate any infringement. Any organization or individual may not imitate or reproduce in whole or in part of the content. The data herein is based on Hikrobot's internal evaluation. Actual data may vary depending on specific configuration and operating condition. The information herein is subject to change without notice. All the content has been checked conscientiously. Nevertheless, Hikrobot shall not be liable to damages resulting from errors, inconsistencies or omissions.