

MV-CA004-10GM/GC

0.4 MP 1/2.9" CMOS GigE Area Scan Camera



GEN*i*CAM

GIG*E* VISION

Introduction

MV-CA004-10GM/GC adopts Sony IMX 287 CMOS sensor and provides high quality image. The GigE interface provides high-speed real-time transmission of uncompressed data with the maximum frame rate reaching 312.9 fps at full resolution.

Key Feature

- Adopts GigE interface and max. transmission distance of 100 meters without relay
- Supports auto and manual adjustment for gain, exposure control, white balance, LUT, Gamma correction, etc.
- Up to 128 MB local memory for burst transmission and retransmission
- Compatible with GigE Vision Protocol V2.0, GenCam standard and third-party software meeting with GigE Vision Protocol

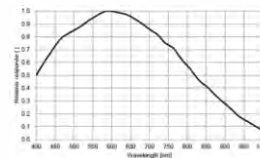
Available Model

Mono camera: MV-CA004-10GM
Color camera: MV-CA004-10GC

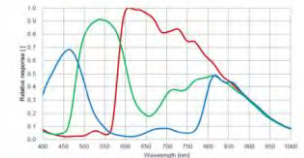
Applicable Industry

Electronic semiconductor, factory automation, quality inspection, etc.

Sensor Quantum Efficiency

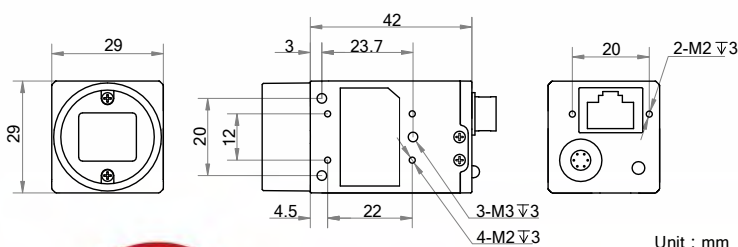


MV-CA004-10GM



MV-CA004-10GC

Dimension



Specification

Model	MV-CA004-10GM	MV-CA004-10GC
Camera		
Sensor type	CMOS, global shutter	
Sensor model	Sony IMX287	
Pixel size	6.9 μm \times 6.9 μm	
Sensor size	1/2.9"	
Resolution	720 \times 540	
Max. frame rate	312.9 fps @720 \times 540	
Dynamic range	74 dB	
SNR	41 dB	
Gain	0 dB to 20 dB	
Exposure time	1 μs to 10 s	
Shutter mode	Off/ Once/ Continuous exposure mode	
Mono/color	Mono	Color
Pixel format	Mono 8/10/10p/12/12p	Mono 8/10/12, Bayer GR 8/10/10p/12/12p YUV 422 Packed, YUV422_YUYV_Packed, RGB8
Binning	Not supported	
Decimation	Not supported	
Reverse image	Supports horizontal and vertical reverse image	
Image buffer	128 MB	
Electrical features		
Data interface	Gigabit Ethernet	
Digital I/O	6-pin Hirose connector provides power supply and I/O, including opto-isolated Input x 1 (Line 0), opto-isolated Output x 1 (Line 1), bi-directional non-isolated I/O x 1 (Line 2)	
Power	3.1 W@12 VDC, voltage range 9 VDC to 26 VDC; supports PoE power supply	
Structure		
Lens mount	C-Mount	
Dimension	29 mm \times 29 mm \times 42 mm (1.1" \times 1.1" \times 1.7")	
Weight	Approx. 68 g (0.15 lb.)	
Ingress Protection	IP 30 (only when lens is correctly mounted and cables are correctly connected)	
Temperature	Working temperature: 0 $^{\circ}\text{C}$ to 50 $^{\circ}\text{C}$ (32 $^{\circ}\text{F}$ to 122 $^{\circ}\text{F}$) Storage temperature: -30 $^{\circ}\text{C}$ to 70 $^{\circ}\text{C}$ (-22 $^{\circ}\text{F}$ to 158 $^{\circ}\text{F}$)	
Humidity	20% to 80% without condensation	
General		
Client software	MVS or third-party software meeting with GigE Vision Protocol	
Operation system	32/64-bit Windows XP/7/10, 32/64-bit Linux or 64-bit MacOS	
Compatibility	GigE Vision V2.0, GenICam	
Certifications	CE, FCC, RoHS	

HIKROBOT

Hangzhou Hikrobot Technology Co., Ltd.
No.399 Danfeng Road, Binjiang District, Hangzhou 310051, China.
en.hikrobotics.com

MaxxVision[®]

Sigmaringer Str. 121
70567 Stuttgart
Tel.: 0711 997 996 3
www.maxxvision.com

Copyright Hikrobot

Hangzhou Hikrobot Technology Co., Ltd. All Rights Reserved. Hangzhou Hikrobot Technology does not tolerate any infringement. Any organization or individual may not imitate or reproduce in whole or in part of the content. The data herein is based on Hikrobot's internal evaluation. Actual data may vary depending on specific configuration and operating condition. The information herein is subject to change without notice. All the content has been checked conscientiously. Nevertheless, Hikrobot shall not be liable to damages resulting from errors, inconsistencies or omissions.