

# MV-CH050-10CM/CC

5 MP 2/3" CMOS Camera Link Area Scan Camera



GEN*i*CAM



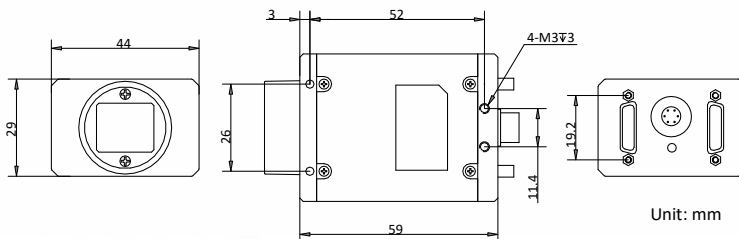
## Introduction

MV-CH050-10CM/CC camera adopts Sony® IMX250 sensor to provide high-quality image. It uses Camera Link interface to transmit non-compressed images in real time with max. frame rate reaching 140 fps.

## Key Feature

- Adopts global shutter CMOS sensor providing high signal-to-noise ratio, wide dynamic range, and high-quality image.
- Resolution of 2432 × 2048 and pixel size of 3.45 μm × 3.45 μm.
- Supports configuration modes of Base, Medium, Full and 80-bit via the Camera Link interface.
- Adopts compact design with mounting holes for flexible mounting.

## Dimension



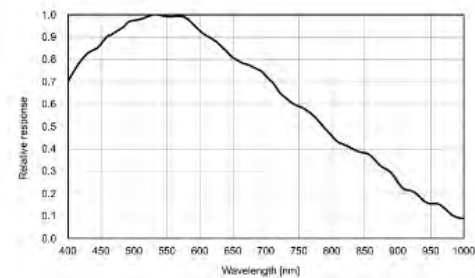
## Available Model

- Mono camera: MV-CH050-10CM
- Color camera: MV-CH050-10CC

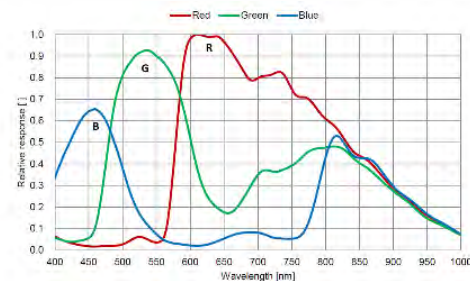
## Applicable Industry

SMT/ PCB AOI, FPD, railway related applications, high-accuracy measurement, etc.

## Sensor Quantum Efficiency



MV-CH050-10CM



MV-CH050-10CC



# Specification

Model	MV-CH050-10CM	MV-CH050-10CC
<b>Camera</b>		
Sensor type	CMOS, global shutter	
Sensor model	Sony® IMX250	
Pixel size	3.45 μm × 3.45 μm	
Sensor size	2/3"	
Resolution	2432 × 2048	
Max. frame rate	140 fps @2432 × 2048	
Configuration mode	Base, Medium, Full, 80-bit	
Tap geometry	1X2_1Y, 1X4_1Y, 1X8_1Y, 1X10_1Y	
Tap number	2 Taps, 4 Taps, 8 Taps, 10 Taps	
Pixel clock	60 MHz, 70 MHz, 85 MHz	
Dynamic range	75.4 dB	
SNR	40 dB	
Gain	0 dB to 20 dB	0 dB to 17 dB
Exposure time	15 μs to 10 sec	4 μs to 10 sec
Exposure mode	Off/Once/Continuous exposure mode	
Mono/color	Mono	Color
Pixel format	Mono 8/10/12	Bayer RG 8/10/12, RGB 8
Binning	Supports 1 × 1, 1 × 2, 1 × 4, 2 × 1, 2 × 2, 2 × 4, 4 × 1, 4 × 2, 4 × 4	Not support
Decimation	Not support	
Reverse image	Supports horizontal and vertical reverse image output	
<b>Electrical feature</b>		
Data interface	Camera Link with SDR interface	
Digital I/O	6-pin Hirose connector provides power and I/O, including opto-isolated input × 1 (Line 0), opto-isolated output × 1 (Line 1), bi-directional non-isolated I/O × 1 (Line 2).	
Power supply	9 VDC to 24 VDC	
Power consumption	Typ. 3.25 W@12 VDC	
<b>Mechanical</b>		
Lens mount	C-mount	
Dimension	44 mm × 29 mm × 59 mm (1.7" × 1.1" × 2.3")	
Weight	Approx. 100 g (0.2 lb.)	
Ingress protection	IP30 (under proper lens installation and wiring)	
Temperature	Working temperature: 0 °C to 50 °C (32 °F to 122 °F) Storage temperature: -30 °C to 70 °C (-22 °F to 158 °F)	
Humidity	20% to 80% RH, non-condensing	
<b>General</b>		
Client software	MVS or frame grabber software meeting with GenICam Protocol	
Operating system	32/64-bit Windows XP/7/10	
Compatibility	Camera Link V2.0, GenICam	
Certification	CE, FCC, RoHS, KC	

**HIKROBOT**

Hangzhou Hikrobot Technology Co., Ltd.  
No.399 Danfeng Road, Binjiang District, Hangzhou 310051, China.  
en.hikrobotics.com

Copyright Hikrobot

Hangzhou Hikrobot Technology Co., Ltd. All Rights Reserved. Hangzhou Hikrobot Technology does not tolerate any infringement. Any content. The data herein is based on Hikrobot's internal evaluation. Actual data may vary depending on specific configuration and the content has been checked conscientiously. Nevertheless, Hikrobot shall not be liable to damages resulting from errors, inconsistencies or omissions.

**MaxxVision®**

Sigmaringer Str. 121  
70567 Stuttgart  
Tel.: 0711 997 996 3

[www.maxxvision.com](http://www.maxxvision.com)