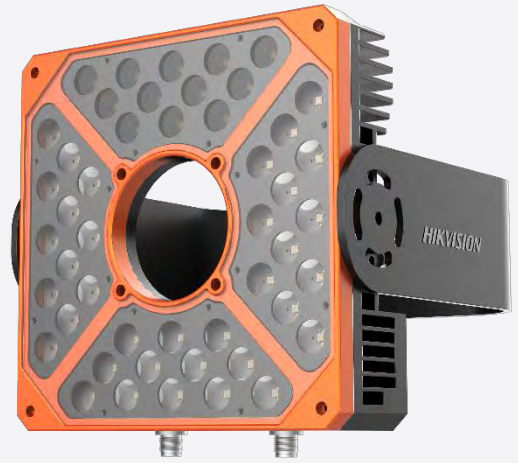


MV-LB-200-200-20WF

White Code Reading Strobe Light

MV-LB-200-200-20WF is a White Code Reading Strobe Light. It has centralized light and high luminescent efficiency and adopts integrated design to work with Hikvision SI Series Smart Code Reader.



Key Feature

- Adopts integrated design to work with Hikvision SI Series Smart Code Reader
- Centralized light and high luminescent efficiency
- Adopts industrial design to provide accurate luminous intensity
- Adopts professionally-designed structural parts, drive circuit, light and etc. to have long lifespan
- Ingenious design and simple installation
- Adopts high-end materials for the whole body to have optimal performance

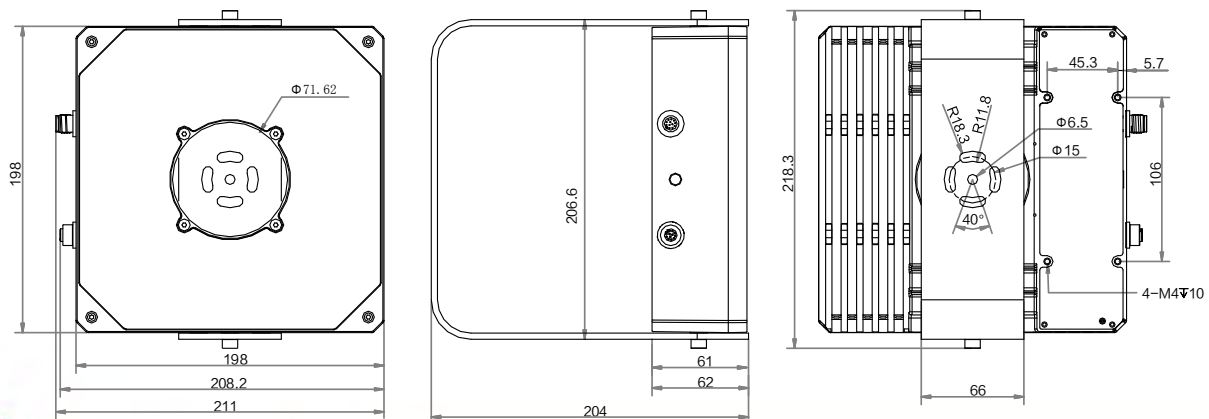
Typical Application

- Logistics code reading
- Warehousing and sorting
- Express sorting

Available Model

MV-LB-200-200-20WF

Dimension



Unit:mm



Specification

Parameters	Mode	MV-LB-200-200-20WF
		White Code Reading Strobe Light
Light		
Light type		Strobe Light, 48 LEDs
Center illumination		25000 lux@1000 mm
Illumination uniformity		0.35
Luminous flux		14000 lm
CRI		>70
Wavelength		420~730 nm
Beam Angle		±20°
Color temperature		5700 K
Best lighting range		0.7~4 m
Electrical features		
Power supply		24 VDC
Power consumption		< 200 W (24 VDC)
Structure		
Dimension		198 mm × 198 mm × 204 mm
Weight		Approx. 3.5 kg (7.7 lb.)
Shell material		Aluminum Alloy
Cable length		10 m
Ingress protection		IP40
Temperature		Working temperature: 0 °C to 50 °C (32 °F to 122 °F) Storage temperature: -30 °C to 70 °C (-22 °F to 158 °F)
Humidity		20% to 80% RH, without condensation
General		
Certification		CE, FCC, RoHS

Note

- The installation and use of the light source should be strictly in accordance with electrical safety regulations in the state and the area.
- Please use the standard power adapter. See Specification for specific requirements of the power adapter.
- Do not leave the light source in the wet or rainy environment in order to reduce the risk of fire or electric shock.
- Do not directly contact with the cooling parts of the light source to avoid burns.
- Do not install indoor light source in the environment where they may be soaked to water or other liquids.
- Do not use the product in the extremely hot, cold, dusty, corrosive or high humidity environment. See Specification for the specific temperature and humidity requirements.
- Please assembly circuit breaker in the wiring to cut off power in the case of emergency.



Hangzhou Hikvision Digital Technology Co.,Ltd
No.700 Dongliu Road,Binjiang District, Hangzhou, 310052, China.
Tel:+86-400-800-5998
en.hikrobotics.com