

MV-CH250-21TM/20TC

25 MP CMOS 10 GigE Area Scan Camera



GEN*i*CAM

10GiGE
VISION

Introduction

MV-CH250-21TM/20TC adopts OnSemi PYTHON25K sensor to provide high-quality image. It uses 10 GigE interface to transmit non-compressed image in real-time with max. frame rate reaching 40 fps.

Key Feature

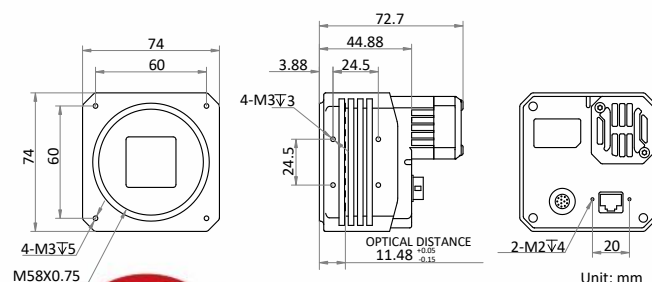
- Resolution of 5120 × 5120 and pixel size of 4.5 μm × 4.5 μm.
- Adopts 10 GigE interface providing max. transmission distance of 100 meters without relay.
- Adopts compact design with mounting holes on the up and bottom panels for flexible mounting.
- Compatible with GigE Vision Protocol V2.0, GenICam Standard, and third-party software based on these protocol and standard.

Applicable Industry

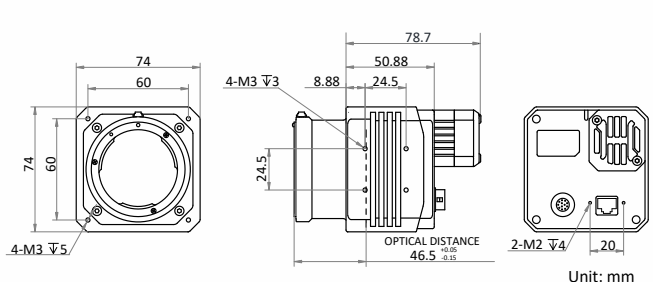
SMT/ PCB AOI, FPD, railway related applications, etc.

Dimension

M58-mount with fan:



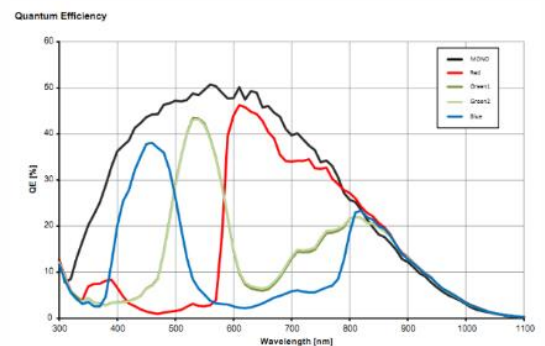
F-mount with fan:



Available Model

- M58-mount with fan, mono camera: MV-CH250-21TM-M58S-NF
- F-mount with fan, mono camera: MV-CH250-21TM-F-NF
- M58-mount with fan, color camera: MV-CH250-20TC-M58S-NF
- F-mount with fan, color camera: MV-CH250-20TC-F-NF

Sensor Quantum Efficiency



Specification

Model	MV-CH250-21TM	MV-CH250-20TC
Camera		
Sensor type	CMOS, global shutter	
Sensor model	OnSemi PYTHON25K	
Pixel size	4.5 μm × 4.5 μm	
Sensor size	23 mm × 23 mm	
Resolution	5120 × 5120	
Max. frame rate	40 fps @5120 × 5120	
Dynamic range	58 dB	
SNR	41 dB	
Gain	0 dB to 15 dB	
Exposure time	45 μs to 10 sec	
Exposure mode	Off/Once/Continuous exposure mode	
Mono/color	Mono	Color
Pixel format	Mono 8/10/10p/12/12p	Mono 8/10/12, Bayer RG 8/10/10p/12/12p, YUV422Packed, YUV422_YUYV_Packed, RGB 8, BGR 8
Binning	Supports 1 × 1, 1 × 2, 2 × 1, 2 × 2	Not support
Decimation	Supports 1 × 1, 2 × 2	
Reverse image	Supports horizontal and vertical reverse image output	
Electrical feature		
Data interface	10 Gigabit Ethernet, compatible with Gigabit Ethernet	
Digital I/O	12-pin Hirose connector provides power and I/O, including opto-isolated input × 1 (Line 0), opto-isolated output × 1 (Line 1), bi-directional non-isolated I/O × 1 (Line 2), RS-232 × 1	
Power supply	9 VDC to 24 VDC	
Power consumption	Typ. 14 W@12 VDC	
Mechanical		
Lens mount	M58-mount, optical back focal length 11.48 mm (0.45") F-mount, optical back focal length 46.5 mm (1.8")	
Dimension	M58-mount with fan: 74 mm × 74 mm × 72.7 mm (2.9" × 2.9" × 2.9") F-mount with fan: 74 mm × 74 mm × 78.7 mm (2.9" × 2.9" × 3.1")	
Weight	M58-mount with fan: approx. 550 g (1.2 lb.), F-mount with fan: approx. 600 g (1.3 lb.)	
Ingress protection	IP40 (under proper lens installation and wiring)	
Temperature	Working temperature: 0 °C to 50 °C (32 °F to 122 °F) Storage temperature: -30 °C to 70 °C (-22 °F to 158 °F)	
Humidity	20% to 95% RH, non-condensing	
General		
Client software	MVS or third-party software meeting with GigE Vision Protocol	
Operating system	32/64-bit Windows XP/7/10	
Compatibility	GigE Vision V2.0, GenICam	
Certification	CE, FCC, RoHS, KC	

HIKROBOT

Hangzhou Hikrobot Technology Co., Ltd.
No.399 Danfeng Road, Binjiang District, Hangzhou 310051, China.
en.hikrobotics.com

MaxxVision®

Sigmaringer Str. 121
70567 Stuttgart
Tel.: 0711 997 996 3
www.maxxvision.com