

MV-CL166-91FC

16384 P XoF Color Line Scan Camera



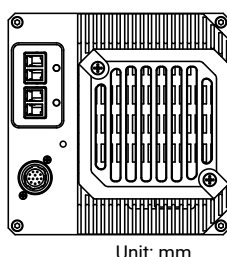
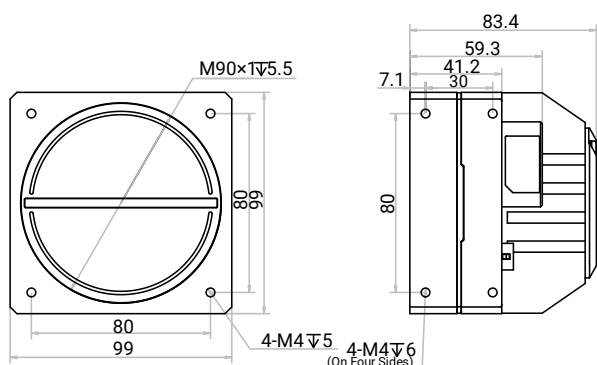
Introduction

MV-CL166-91FC camera adopts 16384×6 RGB true color CMOS sensor and supports transmission protocol of XoF, and its max. line rate reaches 47.3 kHz. It adopts multiple ISP image processing technologies, and is featured with high speed, high accuracy, and high performance.

Key Feature

- Adopts multiple ISP like Gamma correction, flat field correction, LUT, black level offset, etc.
- Supports RGB true color, multiple exposure and acquisition methods.
- Supports image mode of 1-line and 2-TDI.
- Adopts XoF transmission with max. line rate of 47.3 kHz.
- Adopts bi-directional configurable I/O hardware design.
- Compact design and flexible installation.

Dimension



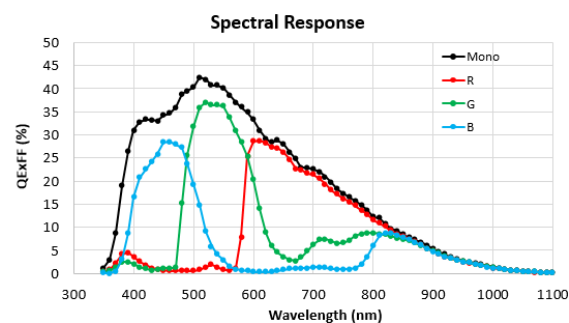
Available Model

MV-CL166-91FC

Applicable Industry

PCB, printing, stone material, wood material, etc.

Sensor Quantum Efficiency



Accessories

- Frame Grabber: MV-GS1002F
- SFP+ Module: MV-AC10G-SFP
- Fiber Patch Cable: MV-AC10G-2LC-2LC-ST

Specification

Model	MV-CL166-91FC
Performance	
Sensor type	CMOS
Pixel size	5 μm \times 5 μm
Resolution	16384 \times 6
Image mode	Supports 1-line, 2-TDI
Max. line rate	47.3 kHz (1-line), 23.6 kHz (2-TDI)
Transmission mode	1 Link, 2 Link
Dynamic range	69.3 dB
SNR	41.4 dB
Gain	1.0 \times
Exposure time	3 μs to 10 ms
Exposure mode	Off/ Once/ Continuous exposure mode, and supports trigger-width exposure
Mono/color	Color
Pixel format	RGB 8, BGR 8
Binning	Supports 1 \times 1, 1 \times 2, 1 \times 4, 2 \times 1, 2 \times 2, 2 \times 4, 4 \times 1, 4 \times 2, 4 \times 4
Reverse image	Supports horizontal reverse image output
Trigger mode	External trigger, internal trigger
External trigger mode	Line trigger, frame trigger, line + frame trigger
Electrical feature	
Data interface	2LC fiber connector
Digital I/O	12-pin P10 connector provides power and I/O: Configurable input/output \times 4 (Line 0/1/3/4) and single-ended/differential is supported.
Power supply	24 VDC
Power consumption	Typ. 19.7 W @24VDC
Mechanical	
Lens mount	M90 *1, flange focal length 12 mm (0.5"), applicable to F-mount via lens adapter
Dimension	99 mm \times 99 mm \times 83.4 mm (3.9" \times 3.9" \times 3.3")
Weight	Approx. 923 g (2.0 lb.)
Ingress protection	IP40 (under proper lens installation and wiring)
Temperature	Working temperature: -20 $^{\circ}\text{C}$ to 55 $^{\circ}\text{C}$ (-4 $^{\circ}\text{F}$ to 131 $^{\circ}\text{F}$) Storage temperature: -30 $^{\circ}\text{C}$ to 80 $^{\circ}\text{C}$ (-22 $^{\circ}\text{F}$ to 176 $^{\circ}\text{F}$)
Humidity	5% to 90% RH, non-condensing
Cooling mode	Cooling fan
General	
Client software	MVS
Operating system	32/64-bit Windows XP/7/10, 64-bit Windows 11
Compatibility	Self-developed protocol, GenICam
Certification	CE, RoHS, KC