

MV-CL162-91FM 16384 P XoF Mono Line Scan Camera



MV-CL162-91FM camera adopts 16384×2 CMOS sensor and supports transmission protocol of XoF, and its max. line rate reaches 120 kHz. It adopts multiple ISP image processing technologies, and is featured with high speed, high accuracy, and high performance.

- Adopts multiple ISP like Gamma, flat field correction, LUT, black level offset, etc.
- Provides dual XoF fiber connectors with 20 GB bandwidth.
- Supports multiple exposure and acquisition methods.
- Supports image mode of 1-Line and 2-TDI.
- Adopts bi-directional configurable I/O hardware design.
- Compact design and flexible installation.

▪ Specification

Performance	
Sensor type	CMOS
Pixel size	3.5 μm × 3.5 μm
Resolution	16384 × 2
Image mode	Supports 1-Line, 2-TDI
Max. line rate	1 Link mode: 73.2 kHz (1-Line), 60 kHz (2-TDI) 2 Link mode: 120 kHz (1-Line), 60 kHz (2-TDI)
Transmission mode	1 Link, 2 Link
Dynamic range	56.7 dB
SNR	37 dB
Gain	1.0 ×
Exposure time	3 μs to 10 ms
Exposure mode	Off/ Once/ Continuous exposure mode, and supports trigger-width exposure
Mono/color	Mono
Pixel format	Mono 8/10/12
Binning	Supports 1 × 1, 1 × 2, 1 × 4, 2 × 1, 2 × 2, 2 × 4, 4 × 1, 4 × 2, 4 × 4
Reverse image	Supports horizontal reverse image output
Trigger mode	External trigger, internal trigger
External trigger mode	Line trigger, frame trigger, line + frame trigger
Electrical feature	
Data interface	2LC fiber connector
Digital I/O	12-pin P10 connector provides power and I/O: Configurable input/output × 4 (Line 0/1/3/4) and single-ended/differential is supported.
Power supply	12 VDC to 24 VDC
Power consumption	Typ. 10.6 W @24VDC
Mechanical	
Lens mount	M72*0.75, flange focal length 12 mm (0.5"), applicable to F-mount via lens adapter
Dimension	132 mm × 76 mm × 57.4 mm (5.2" × 3.0" × 2.3")
Weight	Approx. 600 g (1.3 lb.)
Ingress protection	IP40 (under proper lens installation and wiring)
Temperature	Working temperature: -20 °C to 50 °C (-4 °F to 122 °F) Storage temperature: -30 °C to 80 °C (-22 °F to 176 °F)
Humidity	5% to 90% RH, non-condensing
Cooling mode	Natural cooling
General	
Client software	MVS
Operating system	32/64-bit Windows XP/7/10, 64-bit Windows 11
Compatibility	Self-developed protocol, GenICam
Certification	CE, RoHS, KC, UL

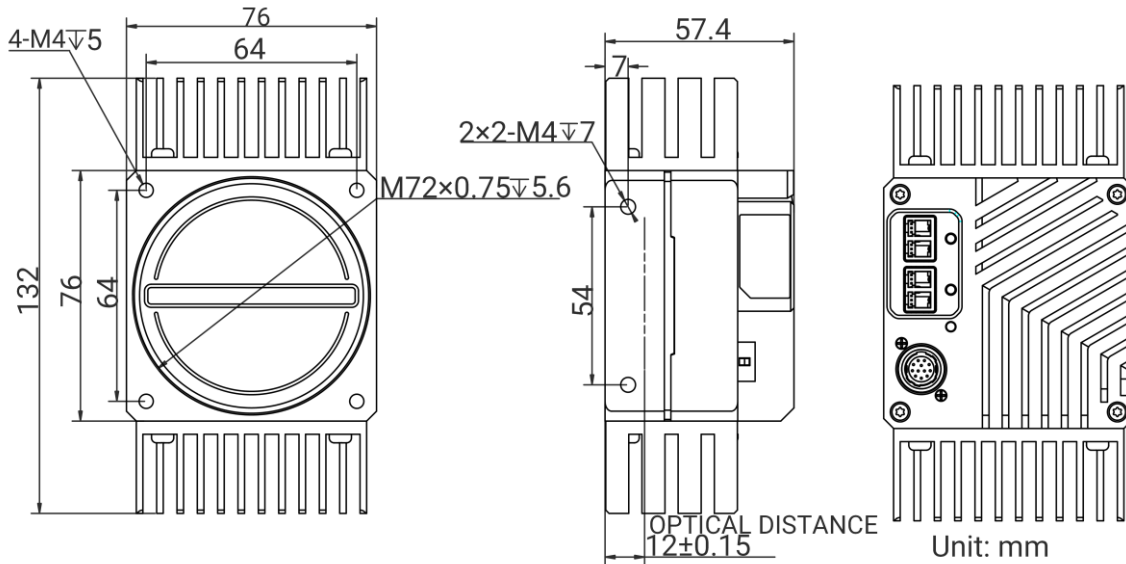
▪ Typical Application

New energy, screen detection, consumer electronics, PCB, semiconductor, etc.

▪ **Available Model**

MV-CL162-91F2M

▪ **Dimension**



▪ **Accessory**

▪ **Optional**

<p>MV-AC10G-2LC-2L C-ST Standard 10Gige fiber cable, 850nm, 2LC-2LC, static scene</p>	<p>MV-AC10G-SFP 10G SPF+ module</p>	<p>MV-GS1000F Dual 10Gbps SFP Frame Grabber</p>
		

Headquarters

No.555 Qianmo Road, Binjiang District,
Hangzhou 310051, China
T +86-571-8807-5998
www.hikvision.com

MaxxVision®

Sigmaringer Str. 121
70567 Stuttgart
Tel.: 0711 997 996 3
www.maxxvision.com



Follow us on social media to get the latest product and solution information.

