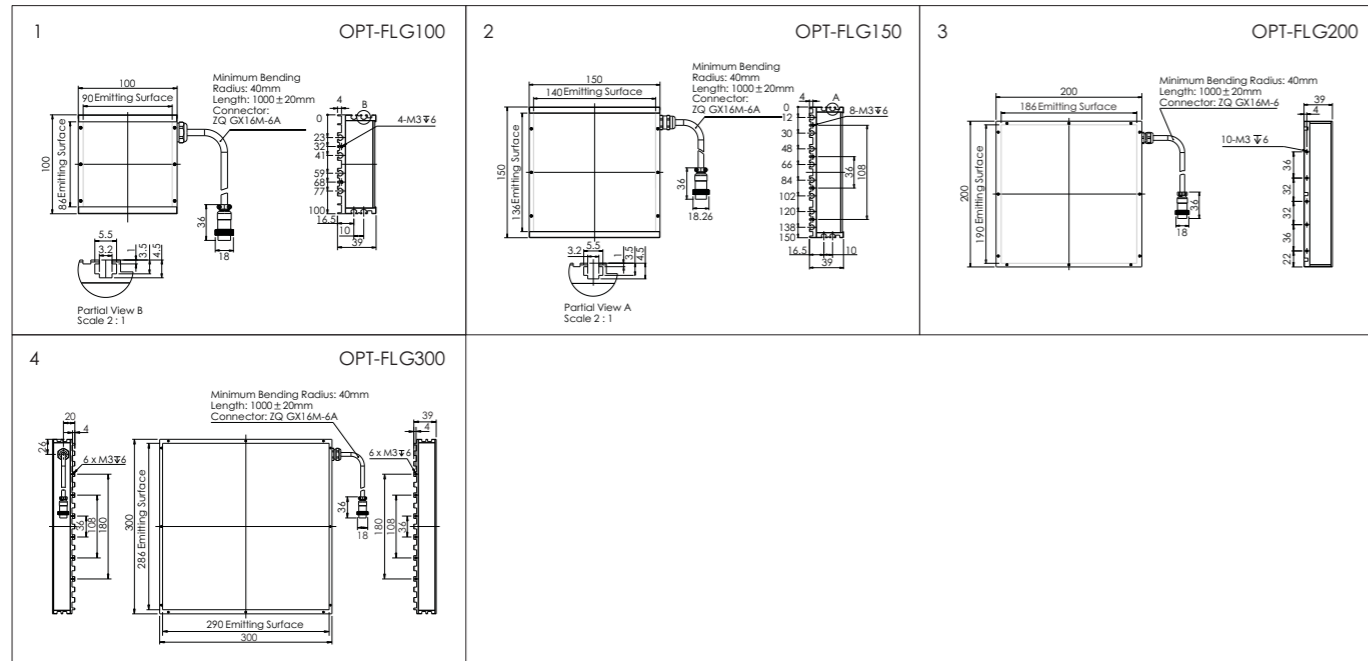


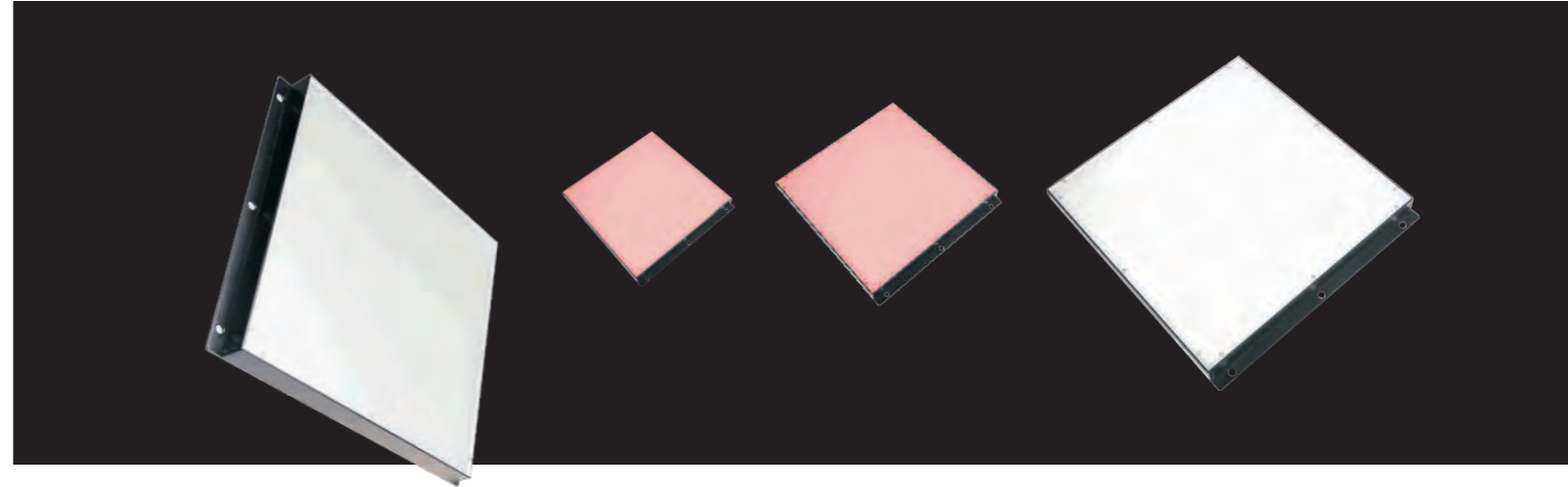
Model Table

No.	Model	Output ●	Output ○●●	Recommended controller
1	OPT-FLG100	0.3A/7.2W	0.65A/15.6W	OPT-DPA6024
2	OPT-FLG150	1.2A/28.8W	1.6A/38.4W	OPT-DPA6024
3	OPT-FLG200	1.2A/28.8W	2.2A/52.8W	OPT-DPA6024
4	OPT-FLG300	2.8A/67.2W	3A/72W	OPT-DPA6024

Dimensional Drawings [mm]



Parallel Back Lights OPT-FLP series



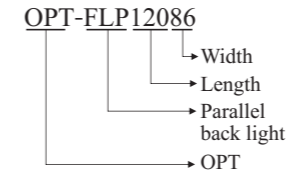
Product Features

- 1 Alternative to classic back lights, applied in applications for high-accuracy measurement of large parts
- 2 OPT-FLP is thinner than OPT-FP series for an even easier installation and space-efficiency
- 3 Large emitting surface

Application Areas

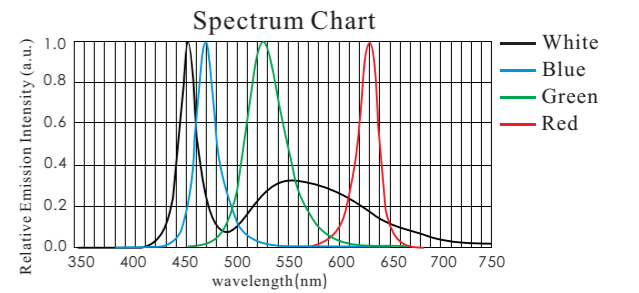
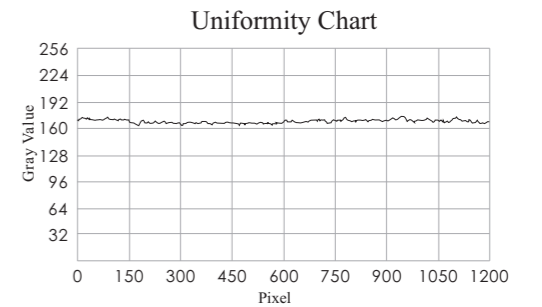
- ◆ The identification and inspection of the large square mechanical or electronic parts
- ◆ The measurement inspection of perspective
- ◆ LED defects inspection

Selection Guide

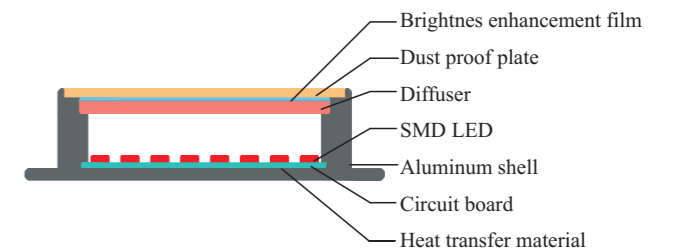


Customization Options

- Color
- Individual control of different areas
- Size
- Installation method
- Heat transfer
- Multi-color

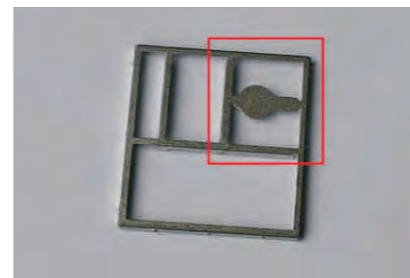


Section Structure Drawing



Application Example

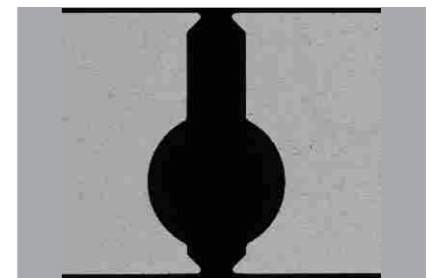
Inspected item: Aluminum plate profile inspection



Original Image



Illuminated



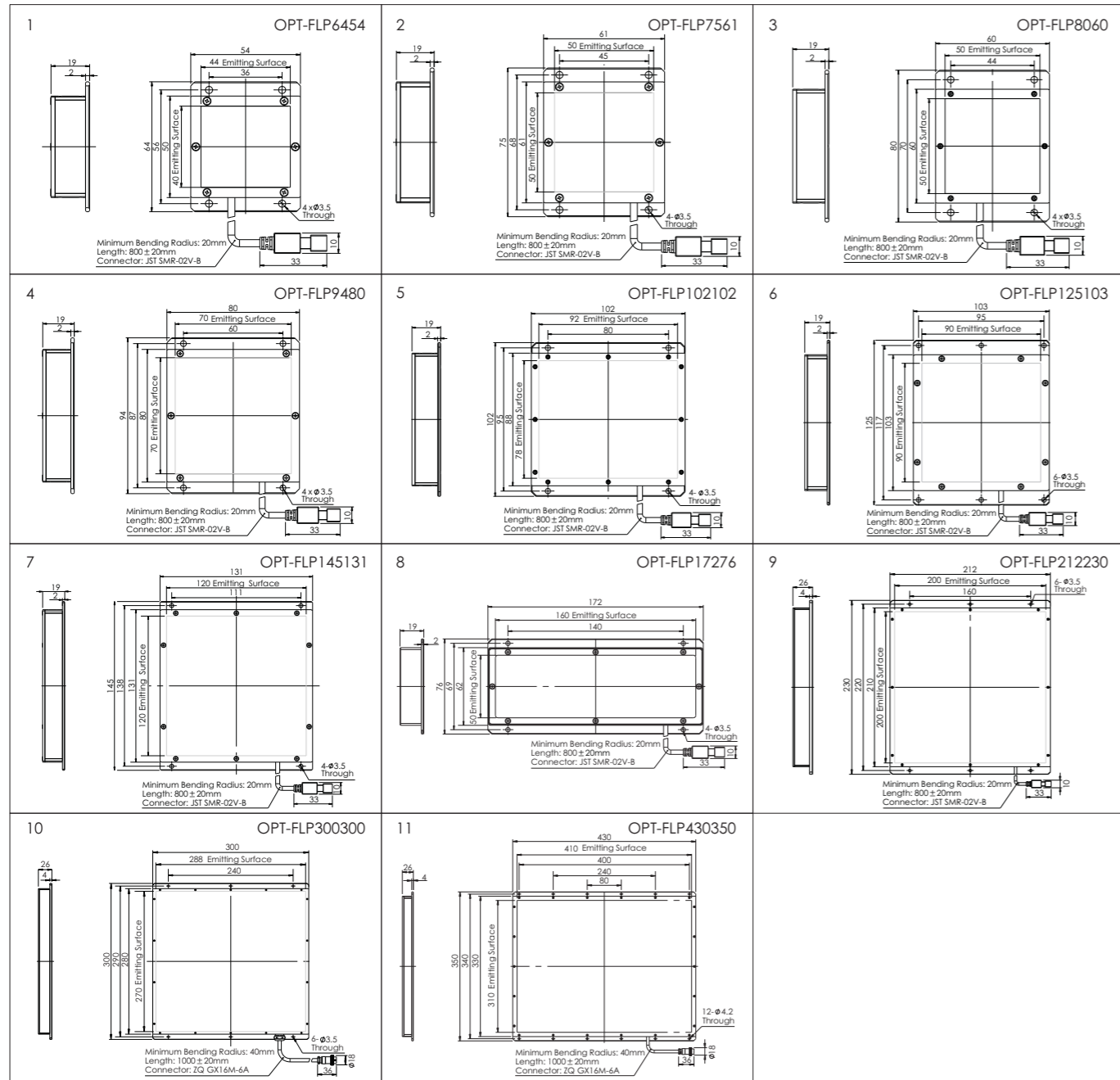
Result Image

Model Table

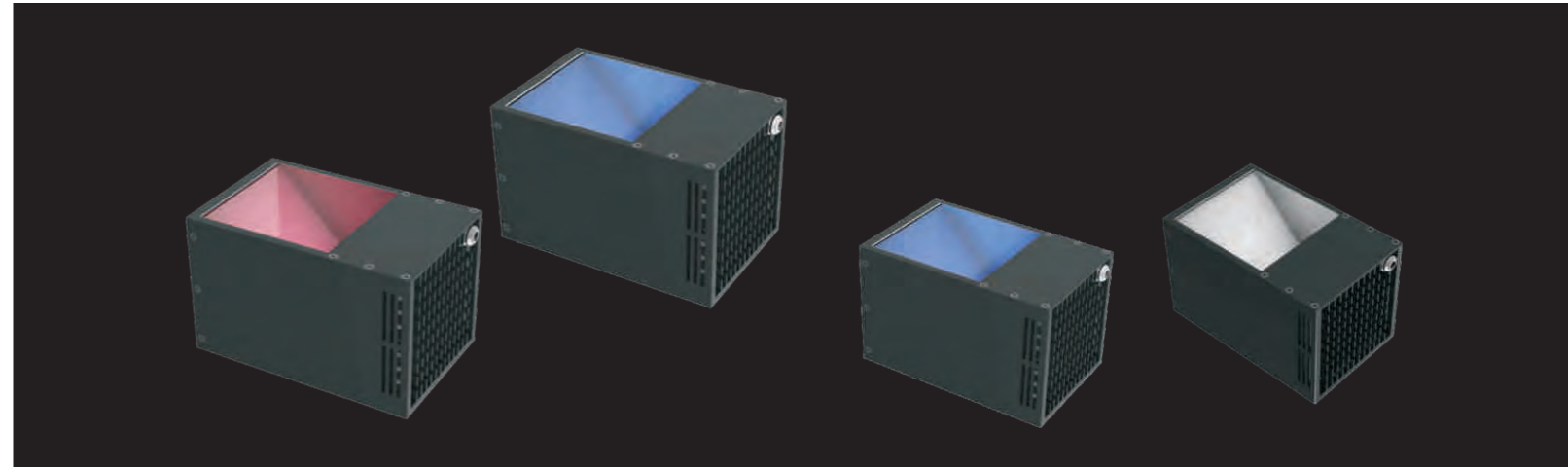
No.	Model	Output ●	Output ○●●	Recommended controller
1	OPT-FLP6454	24V/0.6W	24V/1.4W	OPT-DPA1024E
2	OPT-FLP7561	24V/0.65W	24V/2.3W	OPT-DPA1024E
3	OPT-FLP8060	24V/1.5W	24V/2.4W	OPT-DPA1024E
4	OPT-FLP9480	24V/2.3W	24V/4W	OPT-DPA1024E
5	OPT-FLP102102	24V/2.9W	24V/7.8W	OPT-DPA1024E
6	OPT-FLP125103	24V/6W	24V/6.2W	OPT-DPA1024E

No.	Model	Output ●	Output ○●●	Recommended controller
7	OPT-FLP145131	24V/7.5W	24V/11.4W	OPT-DPA1024E
8	OPT-FLP17276	24V/5.2W	24V/9.7W	OPT-DPA1024E
9	OPT-FLP212230	24V/10.7W	24V/23.4W	OPT-DPA1024E
10	OPT-FLP300300	24V/31.3W	2.8A/68W	OPT-DPA6024
11	OPT-FLP430350	3.2A/77W	4.3A/104W	OPT-DPA6024

Dimensional Drawings [mm]



Coaxial Lights OPT-CO series



Product Features

- 1 High image resolution and uniform illumination, high-density LED array, upgrading the brightness of the illumination
- 2 Special heat-conductive design for longevity and stability
- 3 Special coated beam splitter for maximum light transmission
- 4 Shows unevenness of surfaces, reduces reflections
- 5 Mainly used for the inspection of surfaces for scratches, flaws, damages, etc

Application Areas

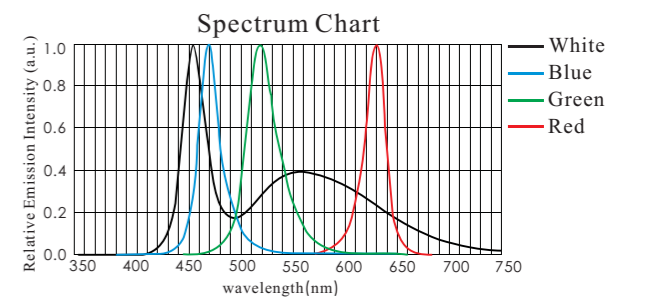
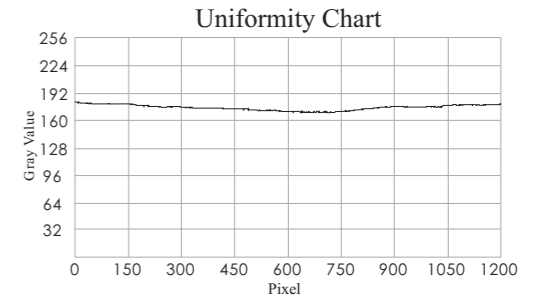
- ◆ Inspection of highly reflective surfaces for scratches
- ◆ Inspection of breakage on chip parts and silicon wafers
- ◆ Marker point localization
- ◆ Bar code recognition
- ◆ Recognition of laser marking characteristics and 2D codes

Selection Guide

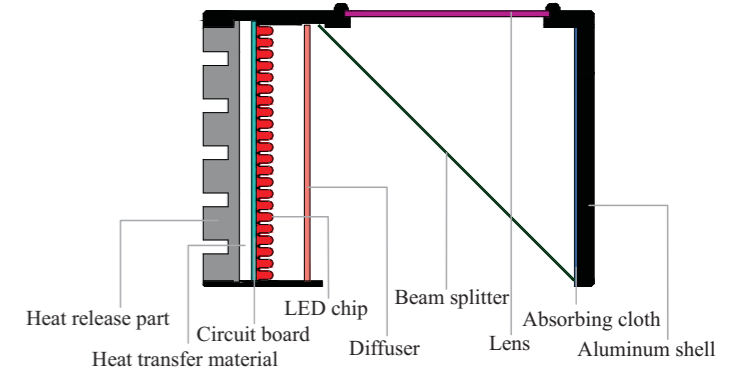
- OPT-CO150
 - Width
 - Coaxial light (COR: turn 90° for illumination)
 - OPT

Customization Options

- Color
- Connector
- Size
- Emitting surface
- Installation method
- Light combination
- Multi-color
- Observation window



Section Structure Drawing



Application Example

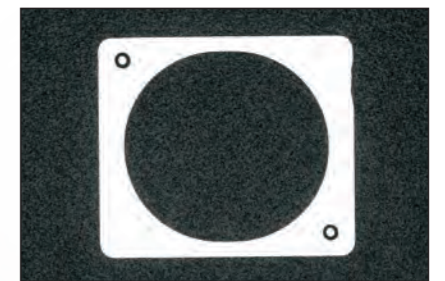
Inspected item: metal plate profile



Original Image



Illuminated



Result Image