

Dome Light

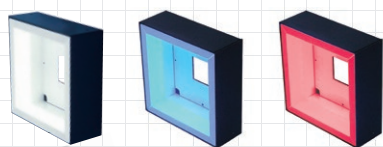
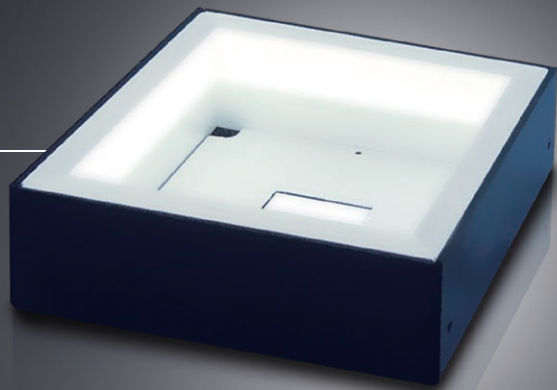
Square Flat-surface Light

IPQC series

Indirect light with high luminance and uniform oblique light

24V DC Models Available

Power LEDs

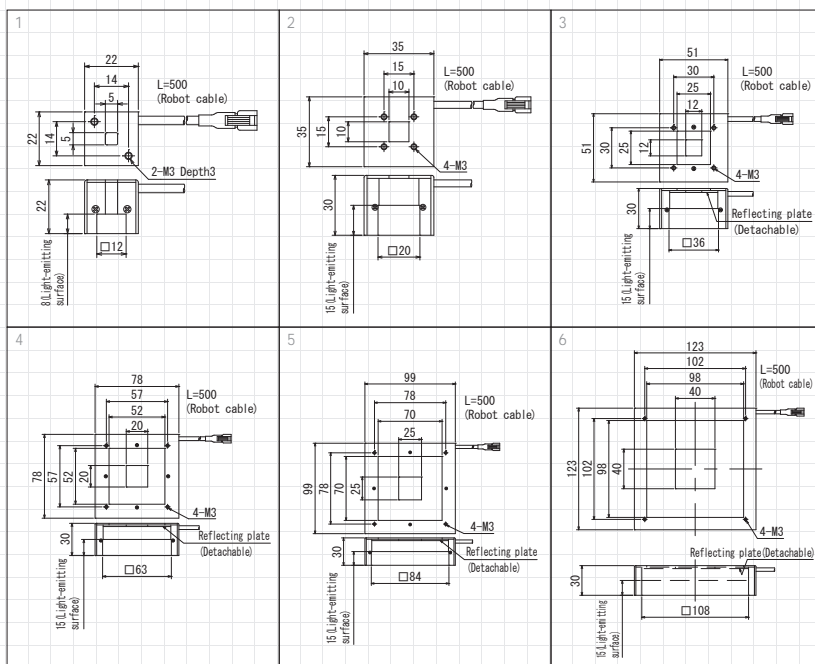


Model	Light Color	Power Consumption (W)	Input Voltage	SAG (*)	Power Supply	Drawing			
IPQC-22□	R	2.1	DC12V	FF	ILP-30M2 (P.85)	1			
	W	2.1							
	B	2.1							
IPQC-35□	R	4.2					FF	IDGB series (P.81)	2
	W	4.7							
	B	4.7							
IPQC-51□	R	6.5		FF	other, overdrive power supply etc.	3			
	W	6.8							
	B	6.8							
IPQC-78□	R	11.5		FF	FA	4			
	W	12.5							
	B	12.5							
IPQC-99□	R	16.5	FF	FF	5				
	W	19							
	B	18							
IPQC-123□	R	21	FF	D8	6				
	W	24							
	B	22.5							

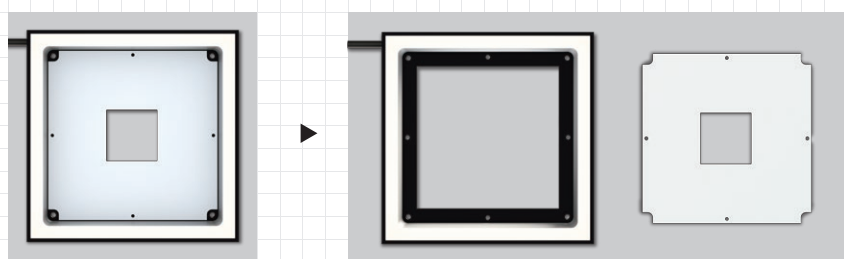
□ represents light color (R=Red, W=White, B=Blue)

*Input voltage is 12 V DC, but 24 V DC models are also available.

*The SAG value indicates the maximum voltage setting for SAG power supplies. For details, see page 91.



Shadowless lighting from the dome lighting

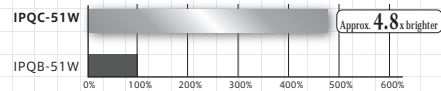


Standard Type

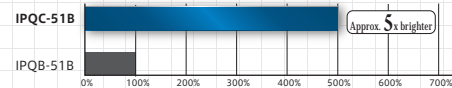
Removing reflective plate changes to shadowless lighting from the dome lighting

Brightness Comparison With Existing model (Reference Values)

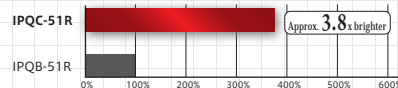
White lighting (WD10mm)



Blue lighting (WD10mm)



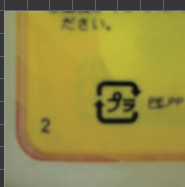
Red lighting (WD10mm)



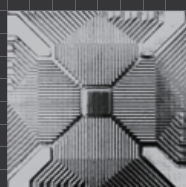
Effect An image without surface reflection can be obtained by illuminating the subject with uniform oblique light.



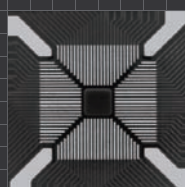
Ring light



IPQC-78W



Ring light



IPQC-99W

LIGHTING STRUCTURE

