



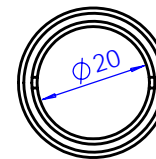
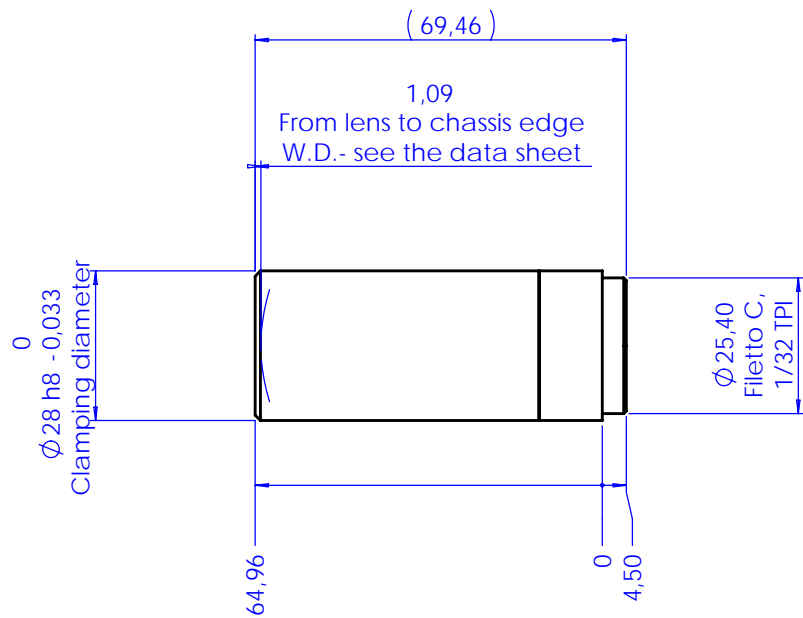
BI-TELECENTRIC LENS FOR 2/3" TO 1/4" MATRIX DETECTORS

Model:	TC 23 09	
Magnification (X):	1	
Object Field (mm):	1/4" (3,6 x 2,7):	3.6 x 2.7
	1/3" (4,8 x 3,6):	4.8 x 3.6
	1/2" (6,4 x 4,8):	6.4 x 4.8
	1/1.8" (7,13 x 5,37):	7.1 x 5.4
	2/3" (8,8 x 6,6):	8.8 x 6.6
Working Distance (mm):	63.3 +/- 2	
Working F-number:	11	
MTF @70 lp/mm (%):	>25	
Field Depth (mm):	1.0 @ F/ 11	
Image side N.A.:	0.045	
Object side N.A.:	0.045	
Telecentricity (degree):	< 0,08	
Distortion (%):	< 0,08	
Mount:	C	
Length (mm):	65.0	
Maximum external diameter (mm):	28.0	
Weigh (g):	120	

NOTES:

- 1) The inner aperture diaphragm can be interchanged with smaller apertures in order to achieve a larger Field Depth
- 2) Compatible with LT RN 23 diffusive Ring Light
- 3) Custom flanges and mechanical interfaces can be provided on request

Rev No.	Description	Date	Name
A	Layout	07/06/05	A.Vismara



Material	N.A.			Mass	0.12 kg	Scale	1:1
Surface treatment	N.A.			Project-Prod.Item/Instrument Telecentric lens 23 09			
Geometrical tolerance (ISO 2768-2)			Class	K	Undimensioned bevels		
Linear tolerance (ISO 2768-2)			Class	m	Undimensioned radii		
0.5	>3-	>6-	>30-	>120	>400-	>1000	>2000
+3	6	30	120	+400	+1000	+2000	+4000
± 0.1	± 0.1	± 0.2	± 0.3	± 0.5	± 0.8	± 1.2	± 2
Date				Name			
Designed		07/06/05	A.Vismara		Drawing No.		
Draw		07/06/05	A.Vismara		02009-0-A		
Checked		X	C. Sedazzari		Sheet		
					1/1		
www.opto-engineering.com OPTO ENGINEERING S.r.l. - 46100 Mantova Italy - Via Cremona, 28 - Tel. +39 0376 229585 - e-mai: info@opto-engineering.com - http://www.opto-engineering.com							

Reproduction forbidden without specific authorization