



**TC 23 16**

# 0,53x Bi-Telecentric lens for detectors up to 2/3"

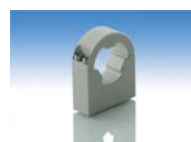


part number		TC 23 16
<b>Magnification</b>		0,528 +/- 3%
<b>Field Of View</b>	(mm x mm)	
with 1/4" (3,6 x 2,7) detector		6,8 x 5,1
with 1/3" (4,8 x 3,6) detector		9,1 x 6,8
with 1/2" (6,4 x 4,8) detector		12,1 x 9,1
with 1/1.8" (7,13 x 5,37) detector		13,5 x 10,2
with 2/3" (8,8 x 6,6) detector		16,7 x 12,5
<b>Working Distance</b>	(mm)	45,3 +/- 1
<b>Working F-number</b>		8
<b>Telecentricity</b>	(degree)	< 0,1
<b>Distortion</b>	(%)	< 0,07
<b>Field Depth</b>	(mm)	2,0
<b>CTF @70 lp/mm</b>	(%)	> 30
<b>Image side N.A.</b>		0,0620
<b>Object side N.A.</b>		0,0330
<b>Mount</b>		C
<b>Length</b>	(mm)	112,7
<b>External diameter</b>	(mm)	37,7
<b>Weight</b>	(g)	300

**ACCESSORIES AND OPTIONS:**



**Collimated/Telecentric illumination:**  
Compatible with LTCL16 illuminator;  
green light suggested.



**Clamping Mechanics:**  
Compatible with CMH016.

