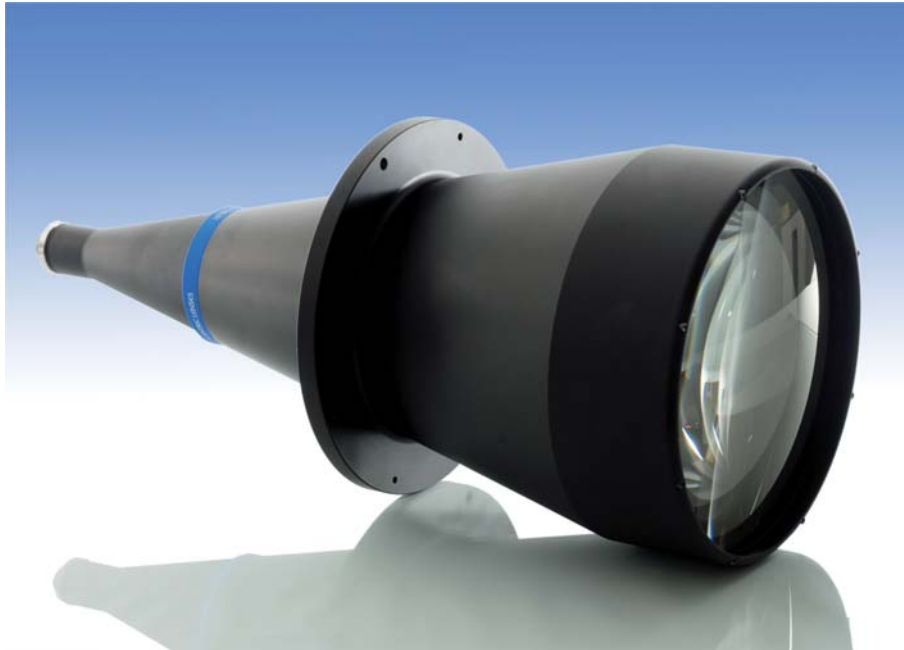


TC 12 192

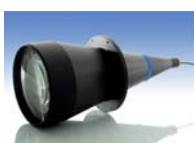
0,033x BI-Telecentric lens for detectors up to 1/2"



part number	TC 12 192	
Magnification	0,033 +/- 3%	
Field Of View		
with 1/4" (3,6 x 2,7) detector	(mm)	108,0 x 81,0
with 1/3" (4,8 x 3,6) detector		144,1 x 108,0
with 1/2" (6,4 x 4,8) detector		192,1 x 144,1
with 1/1.8" (7,13 x 5,37) detector		213,9 x 161,1
with 2/3" (8,8 x 6,6) detector		diam. x 198,1
Working Distance	(mm)	531,0 +/- 16
Working F-number		8
Telecentricity	(degree)	< 0,08
Distortion	(%)	< 0,08
Field Depth	(mm)	603,0
CTF @70 lp/mm	(%)	> 45
Image side N.A.		0,0620
Object side N.A.		0,0020
Mount		C
Length	(mm)	602,6
External diameter	(mm)	260,0
Weight	(g)	11400

Possible vignetting at the image corners with 1/1.8" detectors

ACCESSORIES AND OPTIONS:



Collimated/Telecentric illumination:

Compatible with LTCL192 illuminator;
green light suggested.

