

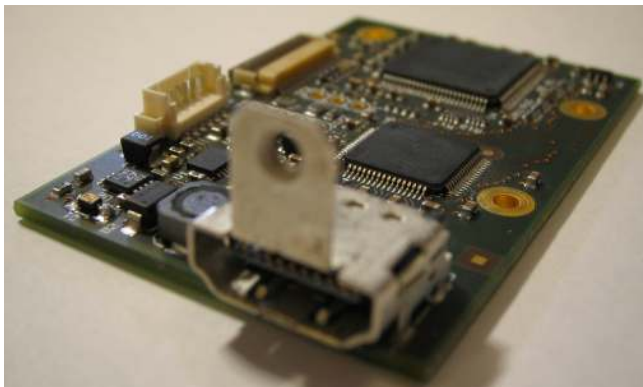
DATASHEET**Datasheet for 711050-HDMI Converter Board**

This board is specially designed for SONY's High Definition block camera (FCB-H10). It converts HD component video from the camera to HDMI / DVI signals for connection to standard monitors.

The board generates the sync signals needed to display the image, and have a connector for power and RS-232 communication with the camera.

Features:

- Supports 720p/59.94/50 (1280x720) and 1080i/59.94/50 (1920x1080) with VESA timing for DVI / HDMI.
- HDMI connector (Right angle with flange for housing mount).
- Color Space converter according to standard (SMPTE 296M).
- Board size 60 x 39mm (fits with mounting holes on the side of the FCB-H10).
- Connector for power and RS-232 to the camera: Molex 6pol 1,25mm connector Receptacle housing (Molex order-no: 51021-0600) with wires included.
- Soldering points for signals: Y/Pb/Pr, Y/C, VBS, reset and GND signals.
- Camera control interface: RS-232 signal level (VISCA).
- Storage temperature: -40°C to 85°C
- Operating temperature: 0°C to 45°C
- Power consumption: 8V to 12V DC Approx. 1.7W (for the HDMI Converter Board) + power for the camera = Approx. 5.5W power supply.
- Approvals (applies to industrial standards).
- Accessory: (HDMI to DVI) or (HDMI to HDMI) cable.



HDMI Converter Board



Mounted on the side of FCB-H10

DATASHEET

Connections:

J1: Connector for power and camera control

Pin No.	Name
1	8V to 12V DC
2	8V to 12V DC
3	GND
4	GND
5	RXD (RS-232 level)
6	TXD (RS-232 level)

J2: 24P FFC Connector for connection to camera (FCB-H10).

J3: HDMI connector for video signal out. Can be used with (HDMI to DVI) or (HDMI to HDMI) cable.

Soldering points for signals:

Con. No.	Name
TP1	Pr-OUT (HD component)
TP2	Pb-OUT (HD component)
TP3	Y-OUT (HD component)
TP4	VBS-OUT
TP5	C-OUT
TP6	Y-OUT
TP7	RESET

NB. GND can be connected from one of the mounting holes.

Dimensions:

