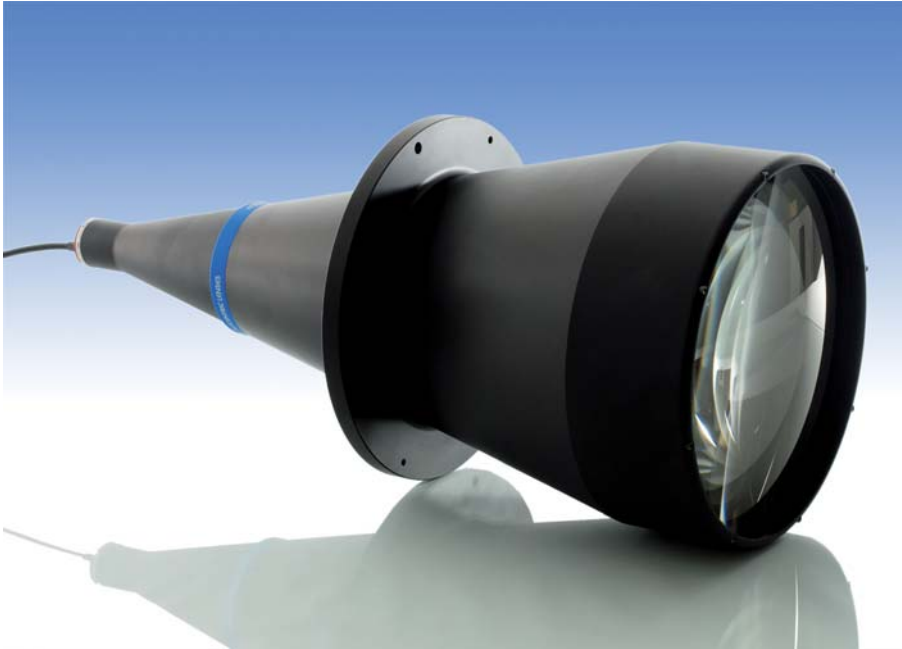


LT CL 192

Collimated Illuminator



| part number | LT CL 192/X | |
|---------------------------------------|-------------|----------|
| Beam Diameter | (mm) | 250,0 |
| Available Colours | | |
| /R (red) | | x |
| /G (green) | | x |
| /B (blue) | | |
| /W (white) | | |
| /IR890 (IR, peak 890 nm) | | |
| /IR940 (IR, peak 940 nm) | | |
| Length | (mm) | 595,1 |
| Outer Diameter | (mm) | 260,0 |
| Compatible Telecentric Lenses | | |
| | TC 13 | n.a. |
| | TC 12 | 192 |
| | TC 23 | 172, 192 |
| | TC 4M | 172, 192 |
| | TC 2M | 192 |
| | TC16M | n.a. |
| DEVICE POWER RATINGS | | |
| DC Voltage | (volt) | 12 to 24 |
| Power Consumption | (watt) | < 2 watt |
| LED DIRECT DRIVE RATINGS | | |
| for /W, /B and /G versions | | |
| Max Forward DC Voltage | (volt) | 3,5 |
| Max Forward Current | (mA) | 350 |
| for /R version | | |
| Max Forward DC Voltage | (volt) | 2,5 |
| Max Forward Current | (mA) | 350 |
| for /IR890 and /IR940 versions | | |
| Max Forward DC Voltage | (volt) | 1,6 |
| Max Forward Current | (mA) | 500 mA |

