

# Ultraviolet Light UV series

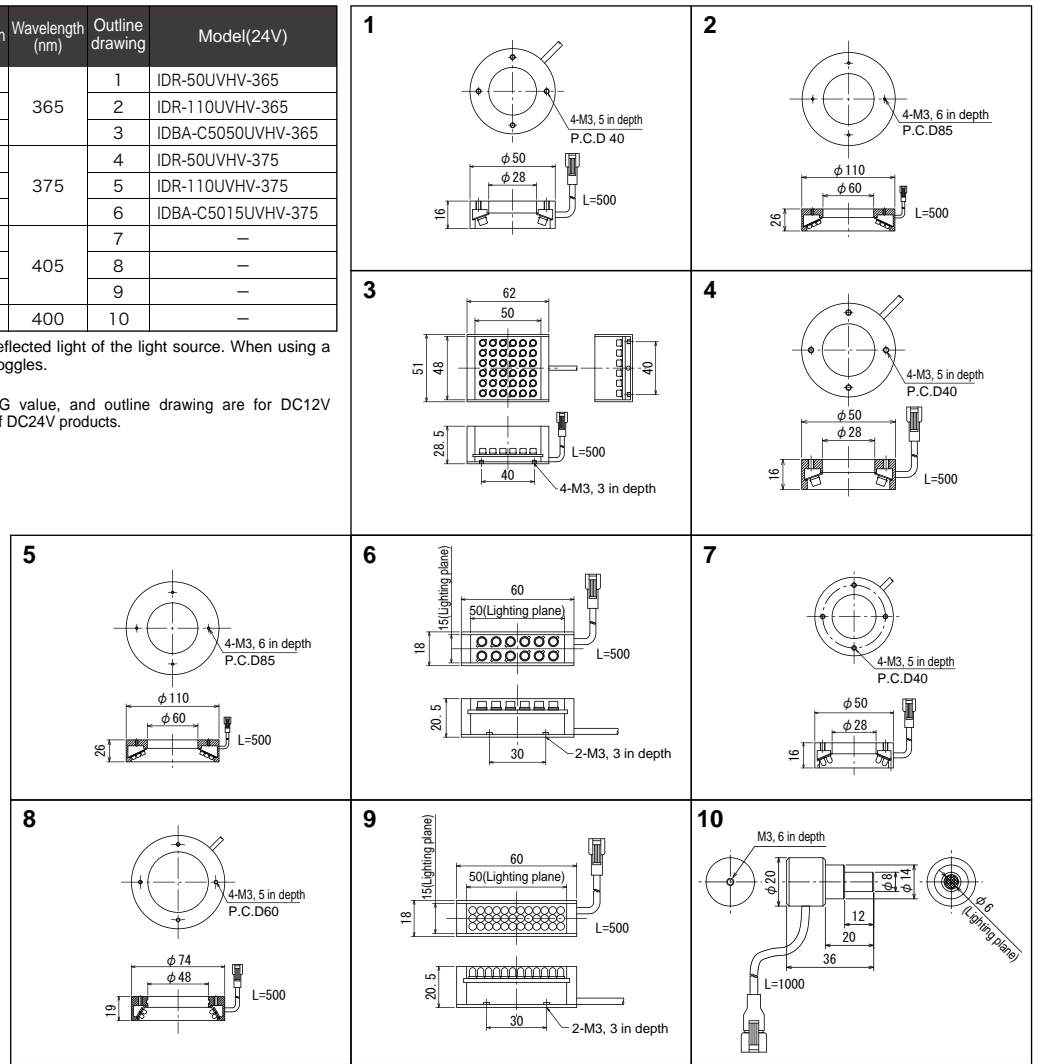


For inspection with higher precision than visible light

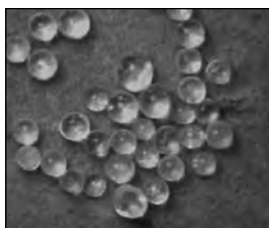
The UV-405 type is available also in the same profile as that of visible light.

Model(12V)	Number of LEDs	Power Consumption (W)	Wavelength (nm)	Outline drawing	Model(24V)
IDR-50/28UV-365	18	1.5	365	1	IDR-50UVHV-365
IDR-110/60UV-365	90	7.2		2	IDR-110UVHV-365
IDBA-C50/50UV-365	36	2.9		3	IDBA-C5050UVHV-365
IDR-50/28UV-375	18	1.5	375	4	IDR-50UVHV-375
IDR-110/60UV-375	90	7.2		5	IDR-110UVHV-375
IDBA-C50/15UV-375	12	1.0		6	IDBA-C5015UVHV-375
IDR-50/28UV-405	45	3.6	405	7	—
IDR-LA74/48UV-405	90	7.2		8	—
IDBA-C50/15UV-405	36	2.9		9	—
IHV-20UV-400	1	—	400	10	—

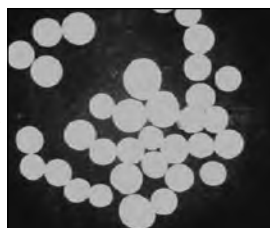
\*Do not look into either direct light or mirror-reflected light of the light source. When using a UV light source, be sure to wear protective goggles.  
 ★For other profiles, please contact us.  
 ★Number of LEDs, power consumption, SAG value, and outline drawing are for DC12V products. Please contact us for specifications of DC24V products.



**Effect** Ultraviolet light can be used to excite particles, as well as to inspect fine defects.



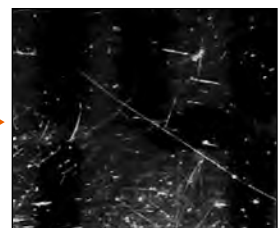
Visual light



IDR-LA74/48UV-405



Visual light



IDR-50/28UV-405