

Cure Ray LED365 IUUV series

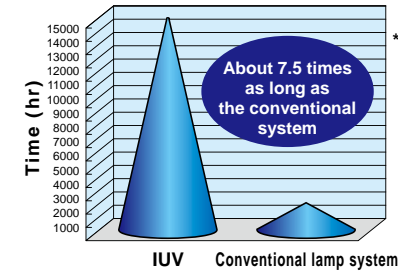
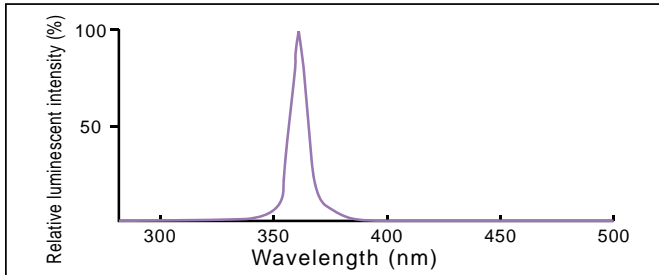


Resin curing and UV excitation / Industry-leading class* UV irradiation intensity

*According to our research as of April 2008

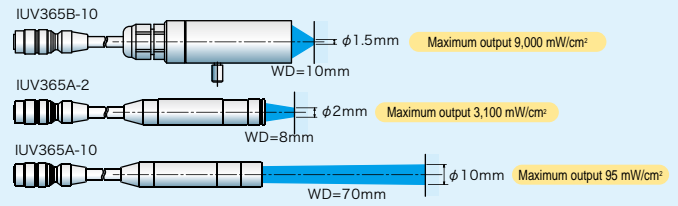
Item	Cure Ray-LED 365		
Model	IUV365A-2	IUV365A-10	IUV365B-10
Spot diameter	ø2mm	ø10mm	ø1.5mm
Work distance	8mm	70mm	10mm
Maximum irradiating intensity	3,100mW/cm ²	95mW/cm ²	9,000mW/cm ²
Maximum output	365nm		
Laser class	Class 3B (IEC60825-1:1993+A1:1997+A2 : 2001)		
Estimated life of light source	15,000 hrs (environmental temperature: 25°C, output: 70%)*		
Operating environment	Ambient temperature: 0 to 35°C Ambient humidity: 35 to 65% (no condensation)		
Option	Fitting: IZ-12		IZ-20

*This value is informative, but not guaranteed.

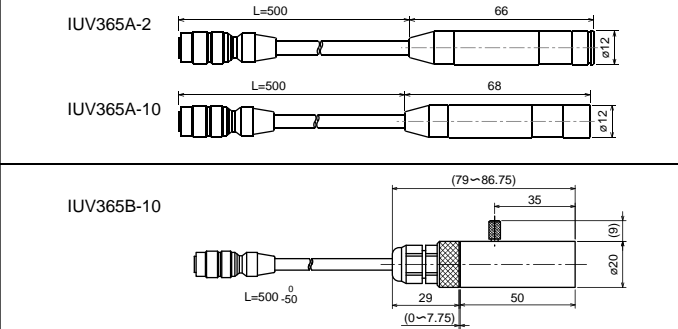


* When using at output of 70% IUV's operating life is about 7.5 times as long as the conventional lamp system as shown in the above graph. It enables reducing the running cost drastically.

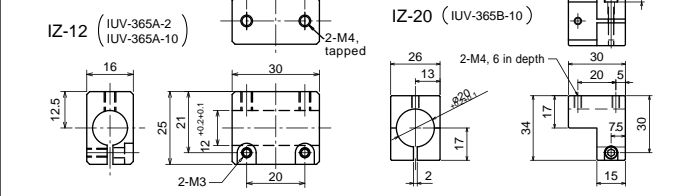
Spot Size



Head unit

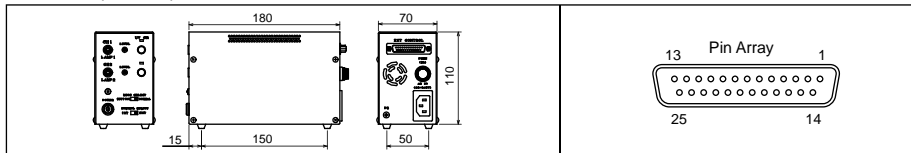


Fitting



Power Supply Specialized for Cure Ray IDC-2000DH-UV

This current light control power supply unit, AC100 to 240 V input, is used to operate two units of the IUV365 model at a time. The light is controlled by an external signal of 0 to 5 V, while the light source is On/Off controlled by non-voltage. It is not equipped with a programmable memory; therefore, it is a low price version that is "controlled by an external signal" and does "not require complicated control".



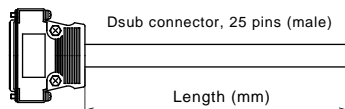
Model name	IDC-2000DH-UV
Power input mode	AC100~240V
Number of light source head connection port (ch)	2 ch (independent light control)
Irradiation mode	NORMAL SETTING
External control	Controllable, 0 to 100 % Constant low output (at adjustment) External On/Off, external 0 to 5V light control, emergency stop
Operating environment	Ambient temperature: 0 to 40°C Ambient humidity: 20 to 70% (no condensation)

External control connector: D-sub connector 25-P (male)

No.	I/O	Terminal Name	Functions
1	Output	(+5V)	
2	Input	ch1 light control	ch1: 0-5V light control
3	Input	ch2 light control	ch2: 0-5V light control
4	Output	(GND)	
5 - 15	-	-	(reserved)
16	Input	CONTROL	
17	Input	ch1 ON/OFF	
18	Input	ch2 ON/OFF	
19	Output	(GND)	
20	Input	Emergency stop	
21	Input	Emergency stop	
22	Input	ch1 UV ON(L)	
23	Input	ch2 UV ON(L)	
24	Output	(GND)	
25	Input	EXT DETECT	NEVER USE

Control Cable for IDC-2000DH-UV Power Supply Specialized for UV Light Source

Pin No.	Cable Color	Pin No.	Cable Color	Pin No.	Cable Color
1	Black	10	N/A	19	Purple
2	White	11	N/A	20	Gray
3	Red	12	N/A	21	Pink
4	Green	13	N/A	22	Light green
5	N/A	14	N/A	23	Orange
6	N/A	15	N/A	24	Light blue
7	N/A	16	Yellow	25	N/A
8	N/A	17	Amber		
9	N/A	18	Blue		



Model name	Length (m)
IC-UV-1	1
IC-UV-2	2
IC-UV-3	3
IC-UV-4	4
IC-UV-5	5
IC-UV-10	10



Instructions for use

*This product is classified as laser class 3B system. Use this product according to the laser standard.
 *Do not look at direct light and mirror-reflected light of the light source. When using a UV light source, be sure to wear a protective goggle.
 *According to the applicable regulations and standards, it is prohibited to use this product except combined with the specified light source head and the power supply, and also to overhaul and reconstruct this product.
 *This unit is totally heated up. Do not touch directly the unit during and immediately after the UV irradiation.