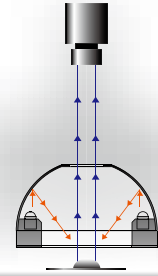


Dome Light IDD-K series



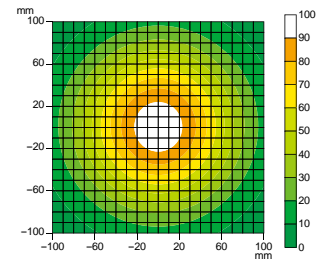
Reflection type uniform irradiation

| Model(12V) | Irradiating color | Number of LEDs | Power Consumption (W) | SAG (°) | Outline drawing | Model(24V) |
|------------|-------------------|----------------|-----------------------|---------|-----------------|-------------|
| IDD-K80R | R | 96 | 3.9 | 70 | 1 | IDD-K80RHV |
| IDD-K80□ | DW/B/G | 72 | 5.8 | FF | | IDD-K80□HV |
| IDD-K120R | R | 156 | 6.3 | 72 | 2 | IDD-K120RHV |
| IDD-K120□ | DW/B/G | 120 | 9.6 | FF | | IDD-K120□HV |
| IDD-K150R | R | 270 | 10.8 | 75 | 3 | IDD-K150RHV |
| IDD-K150□ | DW/B/G | 216 | 17.3 | FF | | IDD-K150□HV |

- ★ □ represents DW = white, B = blue, or G = green.
- ★ In addition to the square bore top plane type, the round bore top plane type IDD-K model is also available. In this case, the model name has an extension of "L" at the end.
- Top plane dimension (Dimensions other than of the top plane are the same as those of the square bore type)
 - IDD-K80□-L : $\phi 20$ mm
 - IDD-K120□-L : $\phi 32$ mm
 - IDD-K150□-L : $\phi 42$ mm
- ★ Number of LEDs, power consumption, SAG value, and outline drawing are for DC12V products. Please contact us for specifications of DC24V products.
- ★ Sizes other than the above are also available.
- ★ SAG represents the maximum SAG setting value. For details, refer to page 56.

Luminance distribution

Super-uniform irradiation can be made at a close-up distance.
 Measurement model: IDD-K150W
 WD: 10mm



IDD-K

Reflection dome

