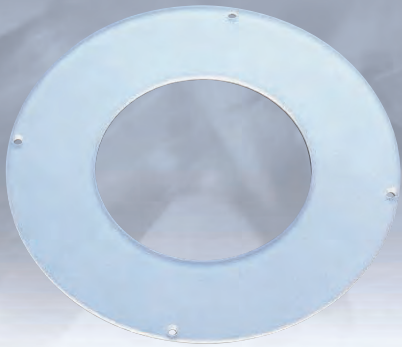


Diffusing Plate for Ring Light / IKR IKR-F



This diffusing plate is specialized for the ring light. It diffuses the light and reduces the shadow of LED elements on a work.

It controls the transmissivity (diffusion rate).

The standard model has transmissivity of 80%. Variations of transmissivity of 60% and 30% with the same thickness are available at the same price.

A special custom size is also available.

This diffusing plate can be mounted easily using screws.

Thickness: 2 mm

Model name	Applicable Light	Model name	Applicable Light	Model name	Applicable Light
IKR-32/10-80	IDR-32/10□	IKR-70/39-80	IDR-70/39□	IKR-F43/15-80	IDR-F43/15□
IKR-38/15-80	IDR-38/15□	IKR-70/35-80	IDR-70/39□	IKR-F50/15-80	IDR-F50/15□
IKR-38/12-80	IDR-38/15□	IKR-90/50-80	IDR-90/50□	IKR-F60/32-80	IDR-F60/32□
IKR-40/25-80	IDR-40/25□	IKR-90/46-80	IDR-90/50□	IKR-F70/37-80	IDR-F70/37□
IKR-40/21-80	IDR-40/25□	IKR-110/60-80	IDR-110/60□	IKR-F90/50-80	IDR-F90/50□
IKR-50/28-80	IDR-50/28□	IKR-110/56-80	IDR-110/60□	IKR-F100/50-80	IDR-F100/50□
IKR-50/24-80	IDR-50/28□	IKR-140/95-80	IDR-140/95□	IKR-F110/60-80	IDR-F110/60□
IKR-66/36-80	IDR-66/36□	IKR-140/91-80	IDR-140/95□		
IKR-66/32-80	IDR-66/36□	IKR-F32/10-80	IDR-F32/10□		

* The above models have the standard transmissivity of 80%. The model name has an extension of 60 at the end for the transmissivity of 60%, and in the same way, 30 for 30%

Diffusing Ring for Low Angle Ring Light / IKR-LA



This diffusing plate is specialized for the low angle ring light. It diffuses the light and reduces the shadow of LED elements on a work.

It forms a uniform light condensing area at a close-up distance by a specially processed acrylic plate.

Model name	Applicable Light	Model name	Applicable Light
IKR-LA50/24-C01	IDR-LA50-24 -2-C01	IKR-LA120/70-3	IDR-LA120/70□-3
IKR-LA74/48	IDR-LA74/48□	IKR-LA140/108-3	IDR-LA140/108□-3
IKR-LA100/68	IDR-LA100/68□-3	IKR-LA200/170-3	IDR-LA200/170□-3

Diffusing Plate for Horizontal Opposed Ring Light / IKR-T

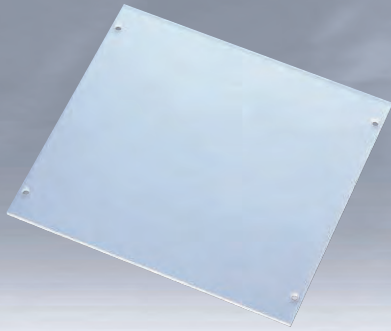


This diffusing ring is specialized for the horizontal opposed ring light. It diffuses the light and reduces the shadow of LED elements on a work.

It enables uniform lighting at a close-up distance by a specially processed acrylic plate.

Model name	Applicable Light	Model name	Applicable Light
IKR-T75/46-1	IDR-T75/46□-1	IKR-T152/114-1	IDR-T152/114□-1
IKR-T84/54-1	IDR-T84/54□-1	IKR-T176/140-1	IDR-T176/140□-1
IKR-T96/60-1	IDR-T96/60□-1	IKR-T206/170-1	IDR-T206/170□-1
IKR-T122/92-1	IDR-T122/92□-1		

Diffusing Plate for Bar Light / IKBA



This diffusing plate is specialized for the bar light. It diffuses the light and reduces the shadow of LED elements on a work.

It controls the transmissivity (diffusion rate). The standard transmissivity is 80%; however, variations of 60% and 30% are available with the same thickness.

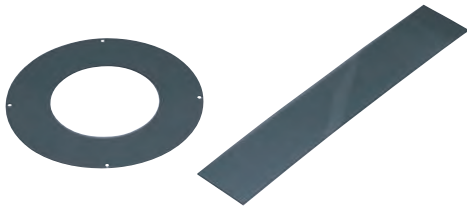
A special custom size is also available. The bar light device is manufactured in different ways depending on whether or not a diffusing plate is used. When you order the light, please specify use of a diffusing plate.

Thickness: 2 mm

Model name	Applicable Light	Model name	Applicable Light	Model name	Applicable Light
IKBA-11/14-80	IDBA-C11/14□	IKBA-100/15-80	IDBA-C100/15□	IKBA-100/100-80	IDBA-C100/100□
IKBA-15/26-80	IDBA-C15/26□	IKBA-140/11-80	IDBA-C140/11□	IKBA-15/200-80	IDBA-C15/200□
IKBA-25/25-80	IDBA-C25/25□	IKBA-132/15-80	IDBA-C132/15□	IKBA-185/30-80	IDBA-C185/30□
IKBA-50/15-80	IDBA-C50/15□	IKBA-72/24-80	IDBA-C72/24□	IKBA-300/24-80	IDBA-C300/24□
IKBA-27/34-80	IDBA-C27/34□	IKBA-50/50-80	IDBA-C50/50□		
IKBA-100/11-80	IDBA-C100/11□	IKBA-70/75-80	IDBA-C70/75□		

*The above models have the standard transmissivity of 80%. The model name has an extension of 60 at the end for the transmissivity of 60%, and in the same way, 30 for 30%

Polarizing Plate (PL Plate) / IKBA-PL IKR-PL IKR-F PL



This PL plate or PL filter is attached to a lighting device and a camera lens to remove gloss and surface reflection of the work.

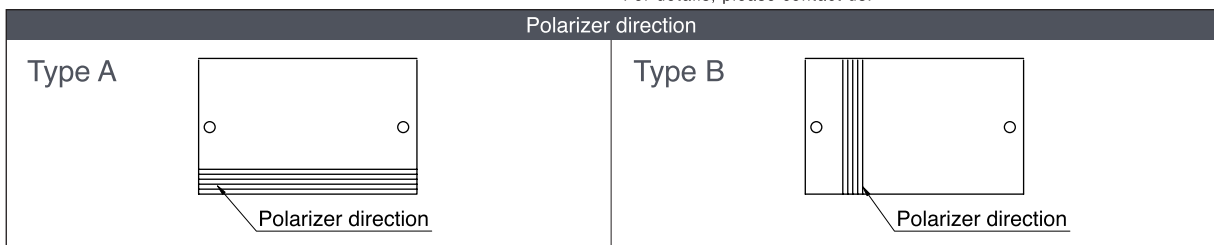
It is fixed with screws, in the same way as a diffusing plate.

The polarizing plate for bar light is grouped into type A and type B according to the polarizer direction.

For Bar Light / IKBA-PL

Model name		Applicable Light	Model name		Applicable Light
IKBA-11/14-A-PL	IKBA-11/14-B-PL	IDBA-C11/14□	IKBA-72/24-A-PL	IKBA-72/24-B-PL	IDBA-C72/24□
IKBA-15/26-A-PL	IKBA-15/26-B-PL	IDBA-C15/26□	IKBA-50/50-A-PL	IKBA-50/50-B-PL	IDBA-C50/50□
IKBA-25/25-A-PL	IKBA-25/25-B-PL	IDBA-C25/25□	IKBA-70/75-A-PL	IKBA-70/75-B-PL	IDBA-C70/75□
IKBA-50/15-A-PL	IKBA-50/15-B-PL	IDBA-C50/15□	IKBA-100/100-A-PL	IKBA-100/100-B-PL	IDBA-C100/100□
IKBA-27/34-A-PL	IKBA-27/34-B-PL	IDBA-C27/34□	IKBA-15/200-A-PL *	IKBA-15/200-B-PL *	IDBA-C15/200□
IKBA-100/11-A-PL	IKBA-100/11-B-PL	IDBA-C100/11□	IKBA-185/30-A-PL *	IKBA-185/30-B-PL *	IDBA-C185/30□
IKBA-100/15-A-PL	IKBA-100/15-B-PL	IDBA-C100/15□	IKBA-300/24-A-PL *	IKBA-300/24-B-PL *	IDBA-C300/24□
IKBA-132/15-A-PL	IKBA-132/15-B-PL	IDBA-C132/15□			

*The lighting device has to be reformed for attaching a polarizing plate. For details, please contact us.



For Ring Light / IKR-PL IKR-F PL

Model name	Applicable Light	Model name	Applicable Light	Model name	Applicable Light
IKR-32/10-PL	IDR-32/10□	IKR-66/32-PL	IDR-66/36□	IKR-140/91-PL	IDR-140/95□
IKR-38/15-PL	IDR-38/15□	IKR-70/39-PL	IDR-70/39□	IKR-F43/15-PL	IDR-F43/15□
IKR-38/12-PL	IDR-38/15□	IKR-70/35-PL	IDR-70/39□	IKR-F50/15-PL	IDR-F50/15□
IKR-40/25-PL	IDR-40/25□	IKR-90/50-PL	IDR-90/50□	IKR-F60/32-PL	IDR-F60/32□
IKR-40/21-PL	IDR-40/25□	IKR-90/46-PL	IDR-90/50□	IKR-F70/37-PL	IDR-F70/37□
IKR-50/28-PL	IDR-50/28□	IKR-110/60-PL	IDR-110/60□	IKR-F90/50-PL	IDR-F90/50□
IKR-50/24-PL	IDR-50/28□	IKR-110/56-PL	IDR-110/60□	IKR-F100/50-PL	IDR-F100/50□
IKR-66/36-PL	IDR-66/36□	IKR-140/95-PL	IDR-140/95□	IKR-F110/60-PL	IDR-F110/60□