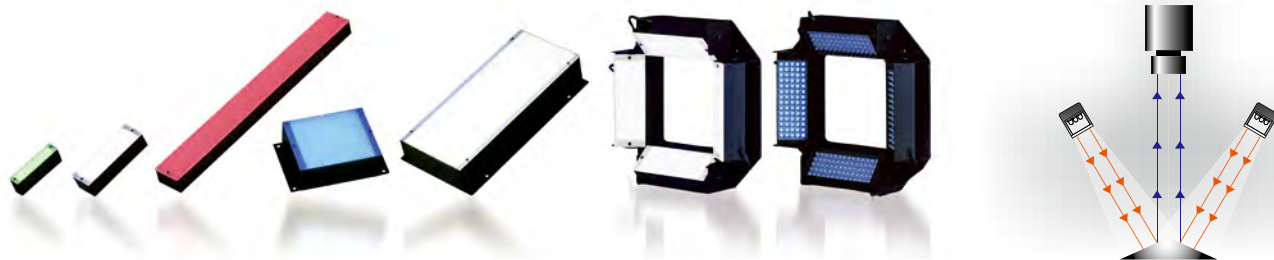


Bar Light • Square Oblique Light IDBA•IDBA-Q series



Extensively used as oblique light or backlight

Model(12V)	Irradiating color	Number of LEDs	Power Consumption (W)	SAG (°)	Outline drawing	Model(24V)
IDBA-C11/14R	R	6	0.3	6D	1	—
IDBA-C11/14□	DW/B/G	6	0.5	FF	1	—
IDBA-C11/14RS-H21	R	6	0.3	6D	2	—
IDBA-C11/14□S-H21	DW/B/G	6	0.5	FF	2	—
IDBA-C15/26RS	R	18	0.8	6D	3	IDBA-C1526RHV IDBA-C1526□HV
IDBA-C15/26□S	DW/B/G	18	1.5	FF	3	—
IDBA-C27/34R	R	48	2.0	6E	4	IDBA-C2734RHV IDBA-C2734□HV
IDBA-C27/34□	DW/B/G	48	3.9	FF	4	—
IDBA-C50/15R	R	36	1.5	6E	5	IDBA-C5015RHV IDBA-C5015□HV
IDBA-C50/15□	DW/B/G	36	2.9	FF	5	—
IDBA-C100/11R	R	48	2.0	6E	6	IDBA-C10011RHV IDBA-C10011□HV
IDBA-C100/11□	DW/B/G	48	3.9	FF	6	—
IDBA-C100/15R	R	72	2.9	6F	7	IDBA-C10015RHV IDBA-C10015□HV
IDBA-C100/15□	DW/B/G	72	5.8	FF	7	—
IDBA-C140/11R	R	70	2.9	6F	8	IDBA-C14011RHV IDBA-C14011□HV
IDBA-C140/11□	DW/B/G	70	5.8	FF	8	—
IDBA-C132/15R	R	96	3.9	70	9	IDBA-C13215RHV IDBA-C13215□HV
IDBA-C132/15□	DW/B/G	96	7.7	FF	9	—
IDBA-C72/24R	R	108	4.4	73	10	IDBA-C7224HVR IDBA-C7224□HV
IDBA-C72/24□	DW/B/G	70	5.8	FF	10	—
IDBA-C25/25RS	R	36	1.5	6E	11	IDBA-C2525RHV IDBA-C2525□HV
IDBA-C25/25□S	DW/B/G	36	2.9	FF	11	—
IDBA-C50/50RS	R	144	5.8	71	12	IDBA-C5050RHV IDBA-C5050□HV
IDBA-C50/50□S	DW/B/G	90	7.2	FF	12	—
IDBA-C70/75RS	R	168	6.8	72	13	IDBA-C7075RHV IDBA-C7075□HV
IDBA-C70/75□S	DW/B/G	168	13.5	FF	13	—
IDBA-C100/100RS	R	342	13.7	77	14	IDBA-C100100RHV IDBA-C100100□HV
IDBA-C100/100□S	DW/B/G	342	27.4	FF	14	—
IDBA-C15/200RS	R	147	6.0	71	15	IDBA-C15200RHV IDBA-C15200□HV
IDBA-C15/200□S	DW/B/G	147	11.8	FF	15	—
IDBA-C185/30RS	R	216	8.7	73	16	IDBA-C18530RHV IDBA-C18530□HV
IDBA-C185/30□S	DW/B/G	216	17.3	FF	16	—
IDBA-C300/24RS	R	426	17.1	7A	17	IDBA-C30024RHV IDBA-C30024□HV
IDBA-C300/24□S	DW/B/G	426	34.1	FF	17	—
IDBA-Q230R	R	12x4	2.0	—	18	—
IDBA-Q230□	DW/B/G	12x4	3.9	—	18	—
IDBA-Q230RS	R	12x4	2.0	—	19	—
IDBA-Q230□S	DW/B/G	12x4	3.9	—	19	—
IDBA-QC360R	R	36x4	5.8	—	20	IDBA-QC360RHV IDBA-QC360□HV
IDBA-QC360□	DW/B/G	36x4	11.6	—	20	—
IDBA-QC690R	R	108x4	17.3	—	21	IDBA-QC690RHV IDBA-QC690□HV
IDBA-QC690□	DW/B/G	70x4	23.2	—	21	—

★□ represents DW = white, B = blue, or G = green. ★ The optional diffusing plate / polarizing plate can be mounted.
 ★ Number of LEDs, power consumption, SAG value, and outline drawing are for DC12V products. Please contact us for specifications of DC24V products. ★ Sizes other than the above are also available.
 * SAG represents the maximum SAG setting value. For details, refer to page 56.

Effect

Example of image photographed by changing the irradiation direction.
 Light : IDBA-C72/24DW



Irradiated from the longitudinal direction



Irradiated from the lateral direction

Luminance distribution

High luminance and super-uniform light can be used except within the peripheral region of 10 mm width on the lighting plane.

Measurement model: IDBA-C100/100DWS

